

**Believe in
children**

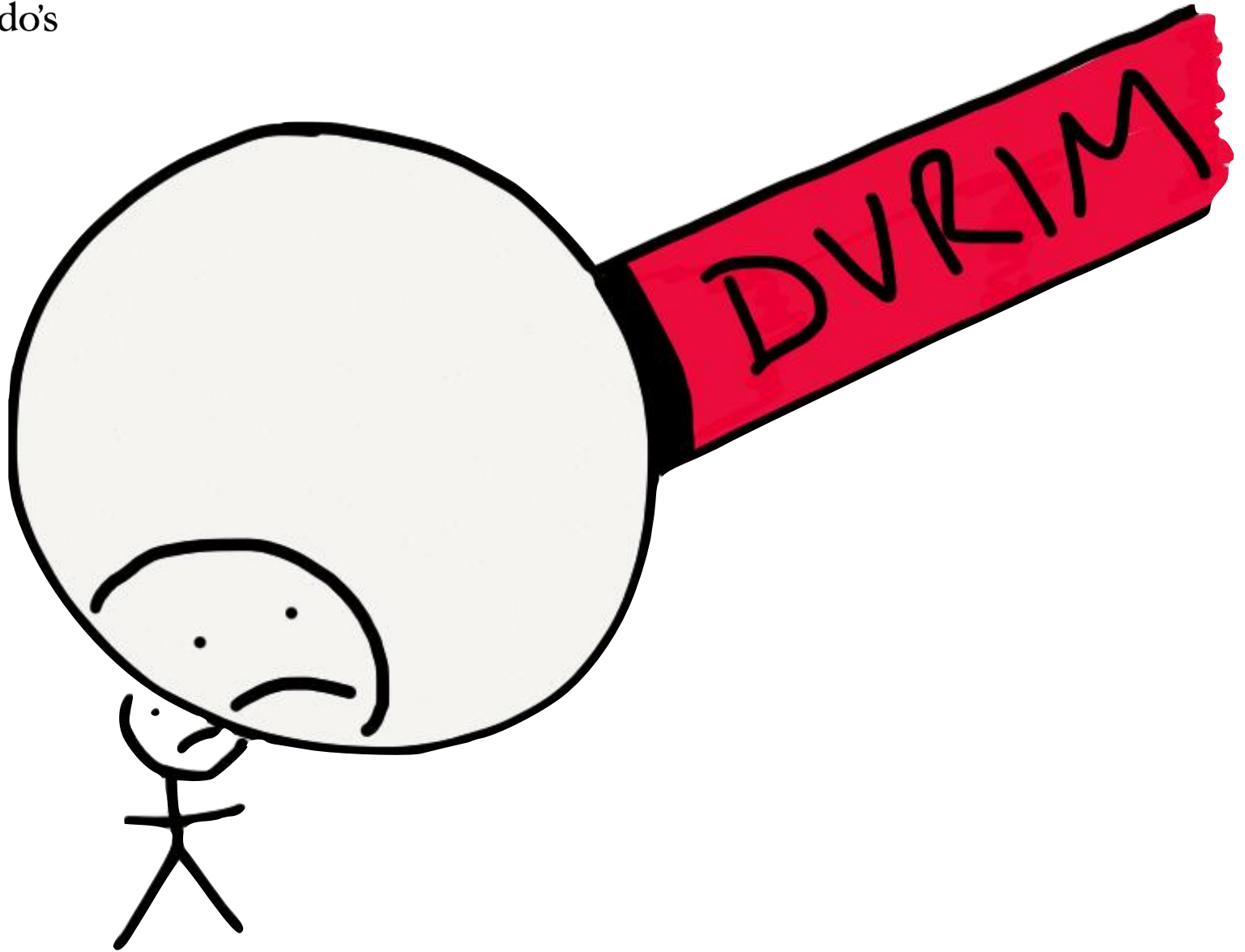


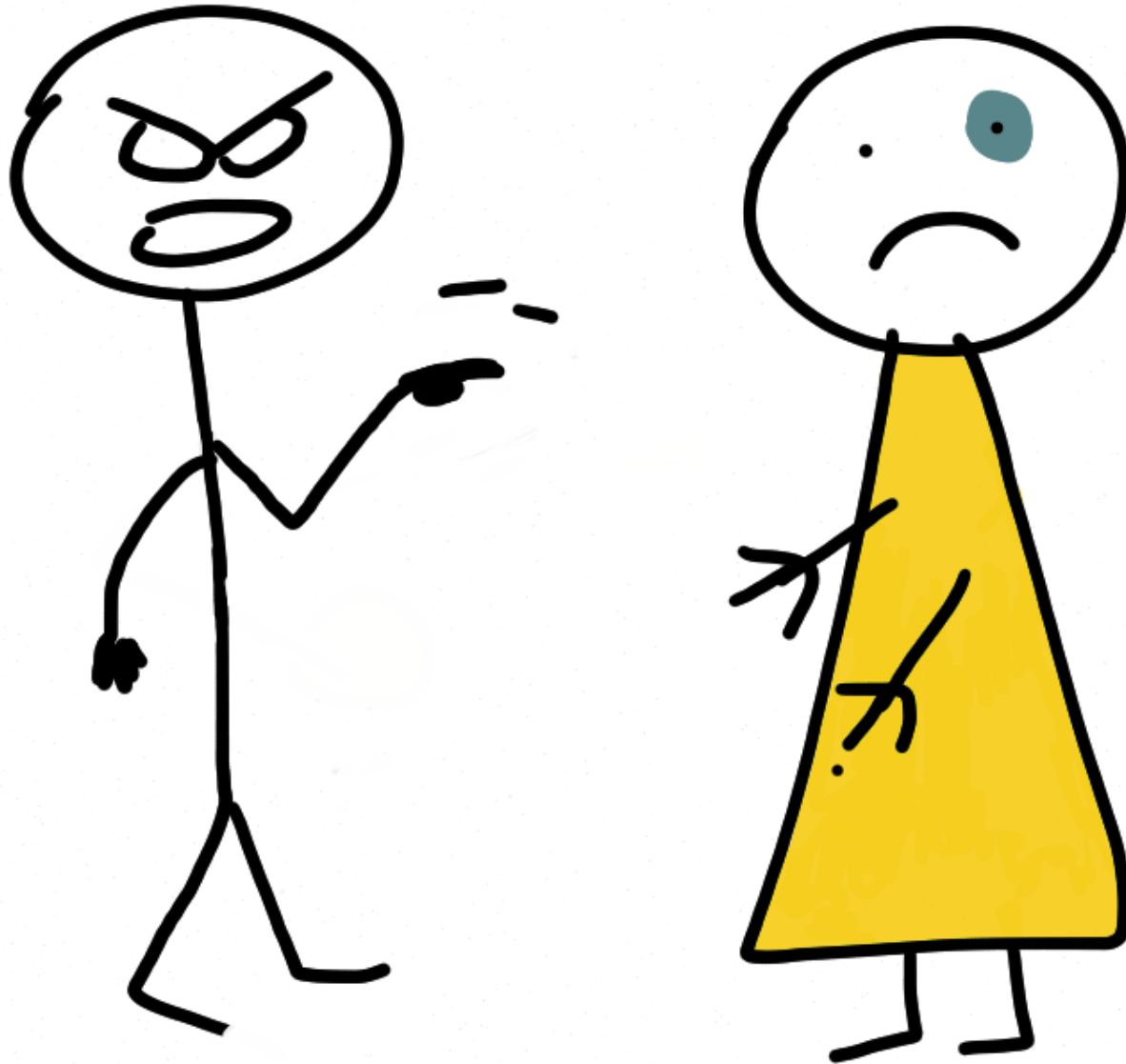
Barnardo's

**Maddie Bell – Children's Domestic Violence
Consultant**

Belfast, Northern Ireland

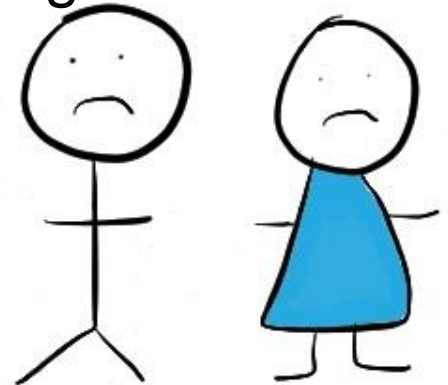
maddie.bell@barnardos.org.uk

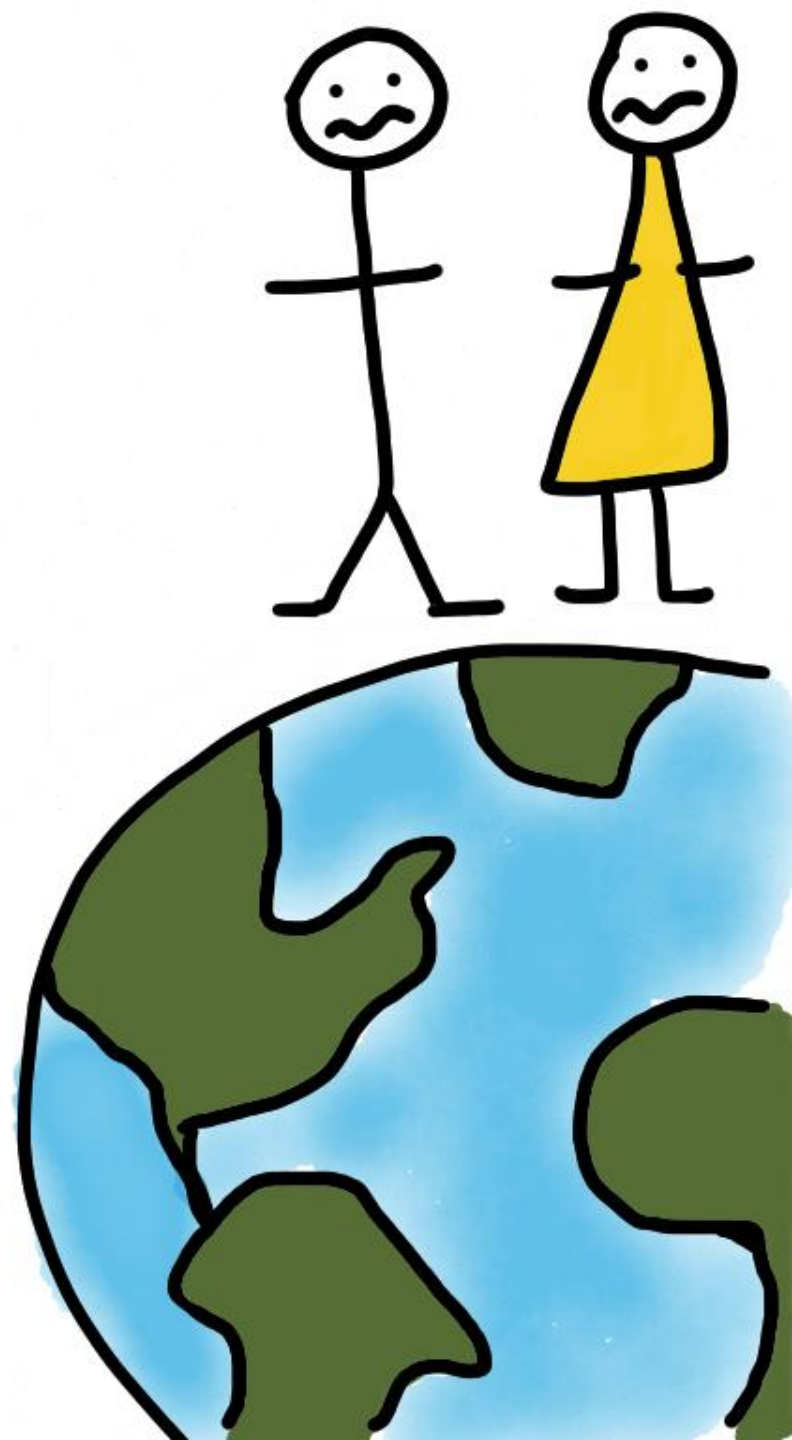
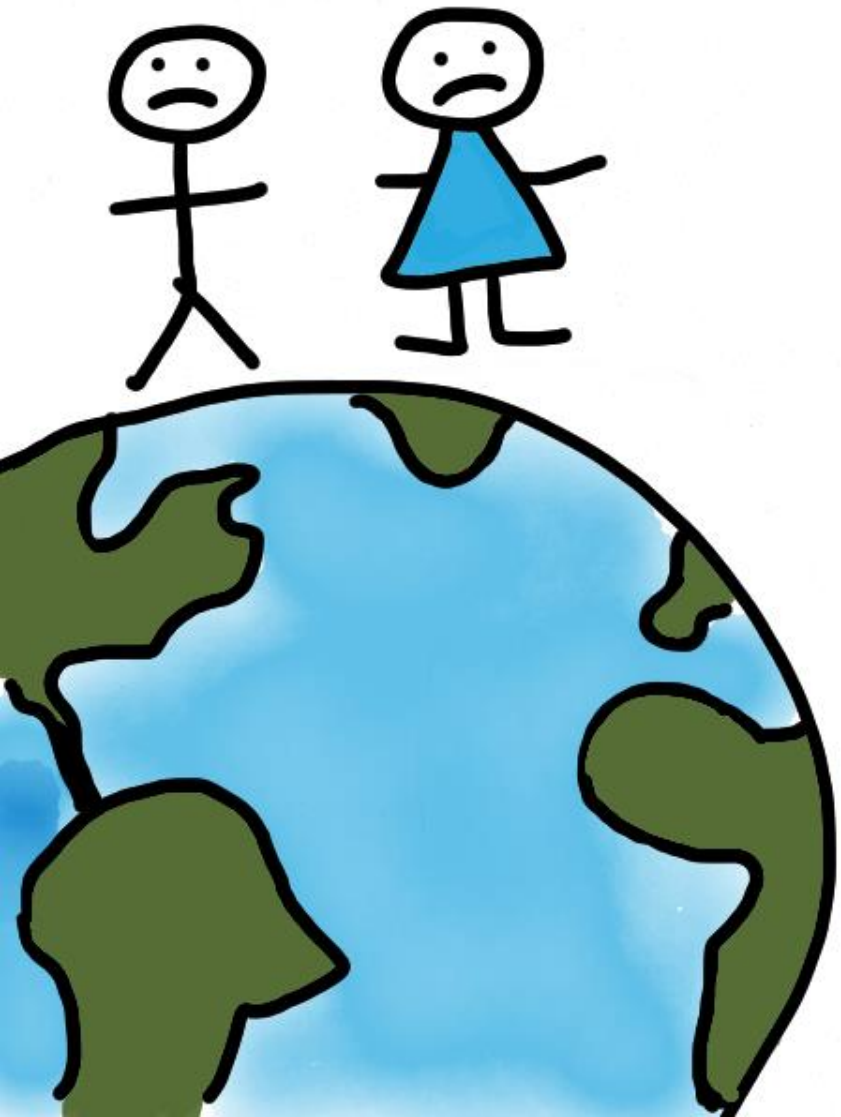


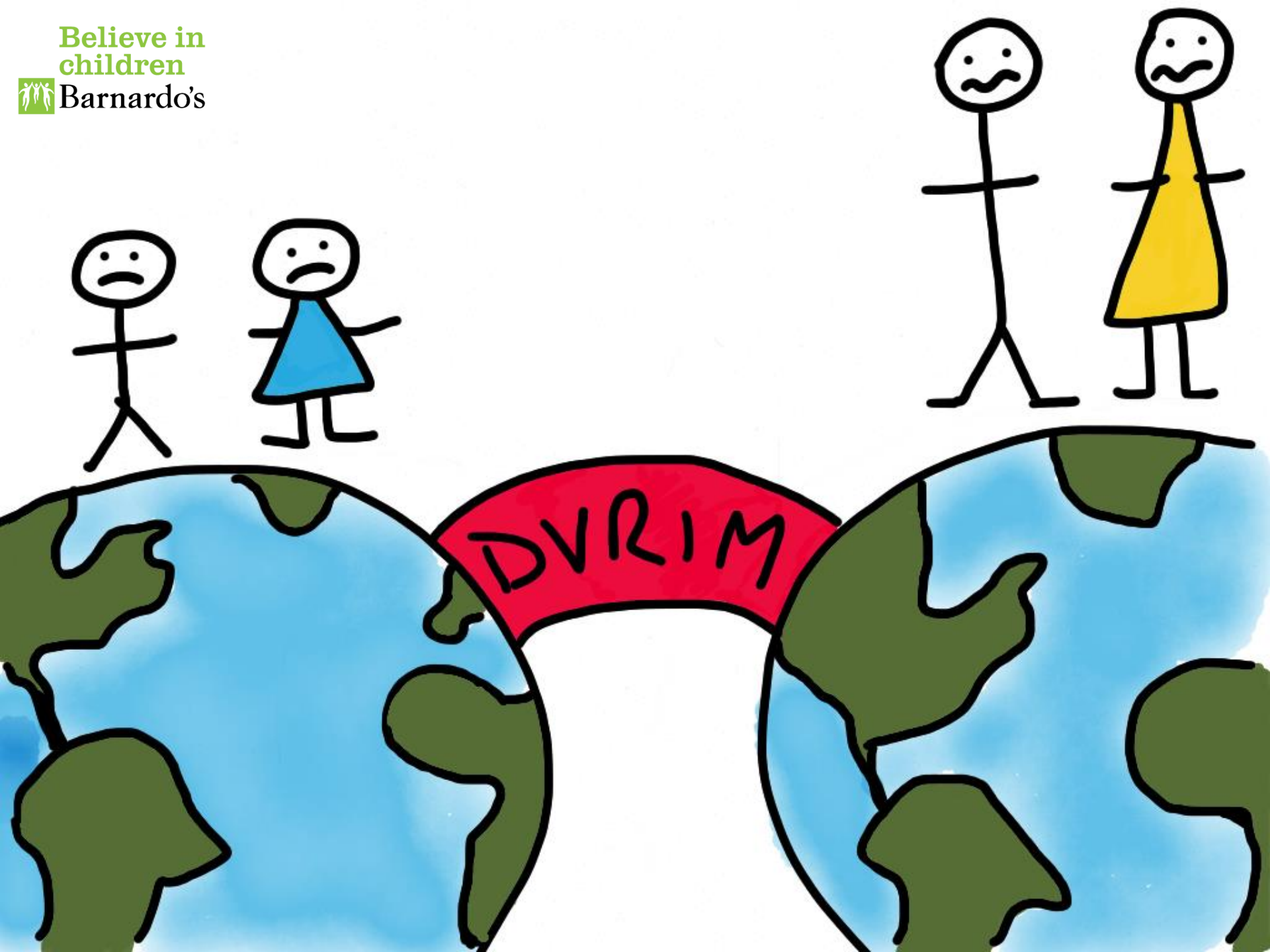




- An introduction to DVRIM
- How it was developed
- How it works
- What are the key challenges and benefits
- What are the key strategies for implementing a multi agency approach using DVRIM

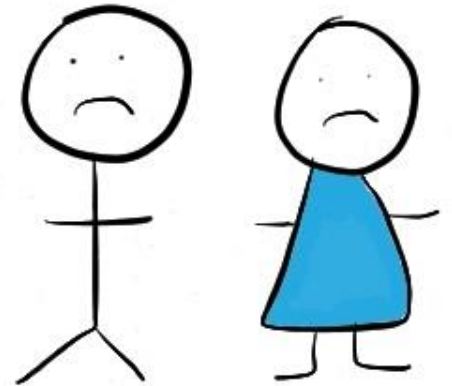






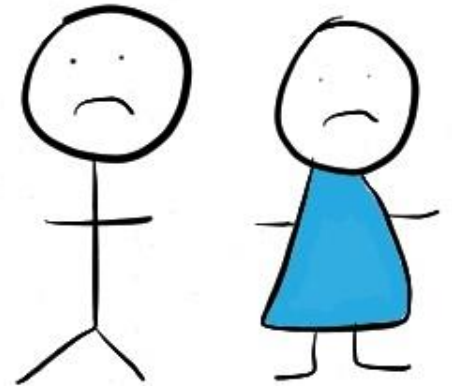
40% - 69%

Overlap between the physical abuse of children and domestic abuse.



15% - 30%

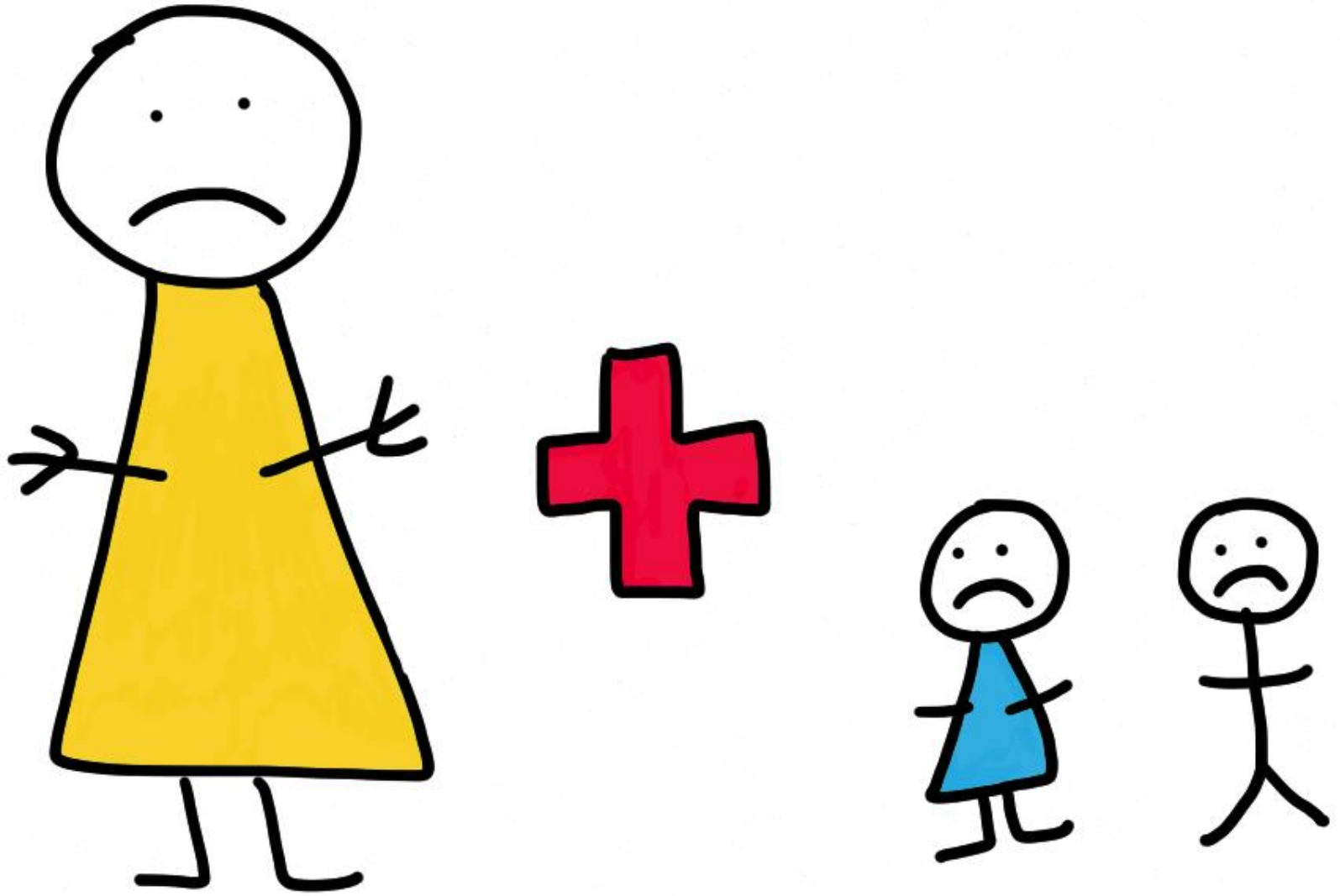
Overlap between the sexual abuse of children and domestic abuse.

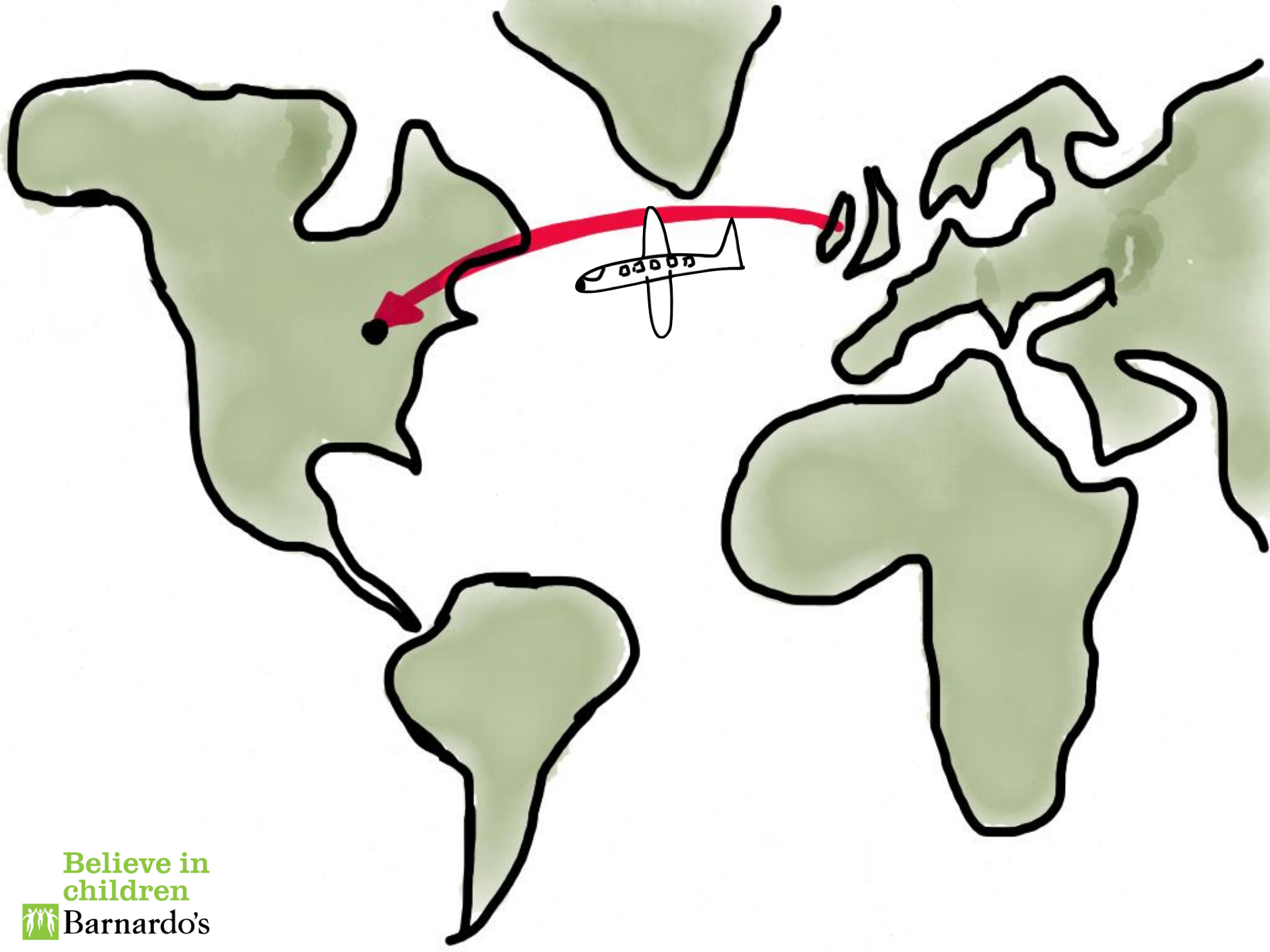


Believe in
children



Barnardo's

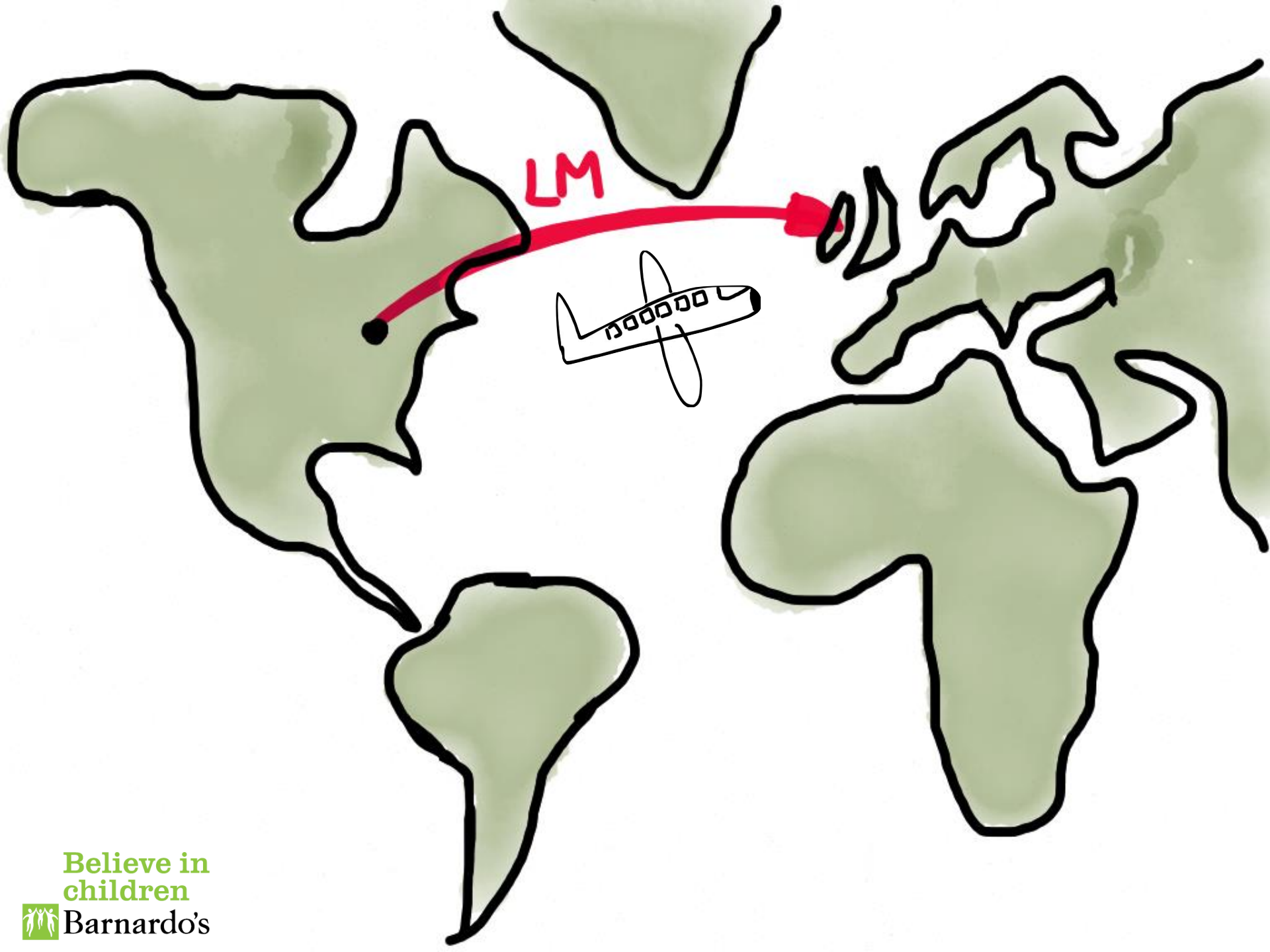




Believe in
children

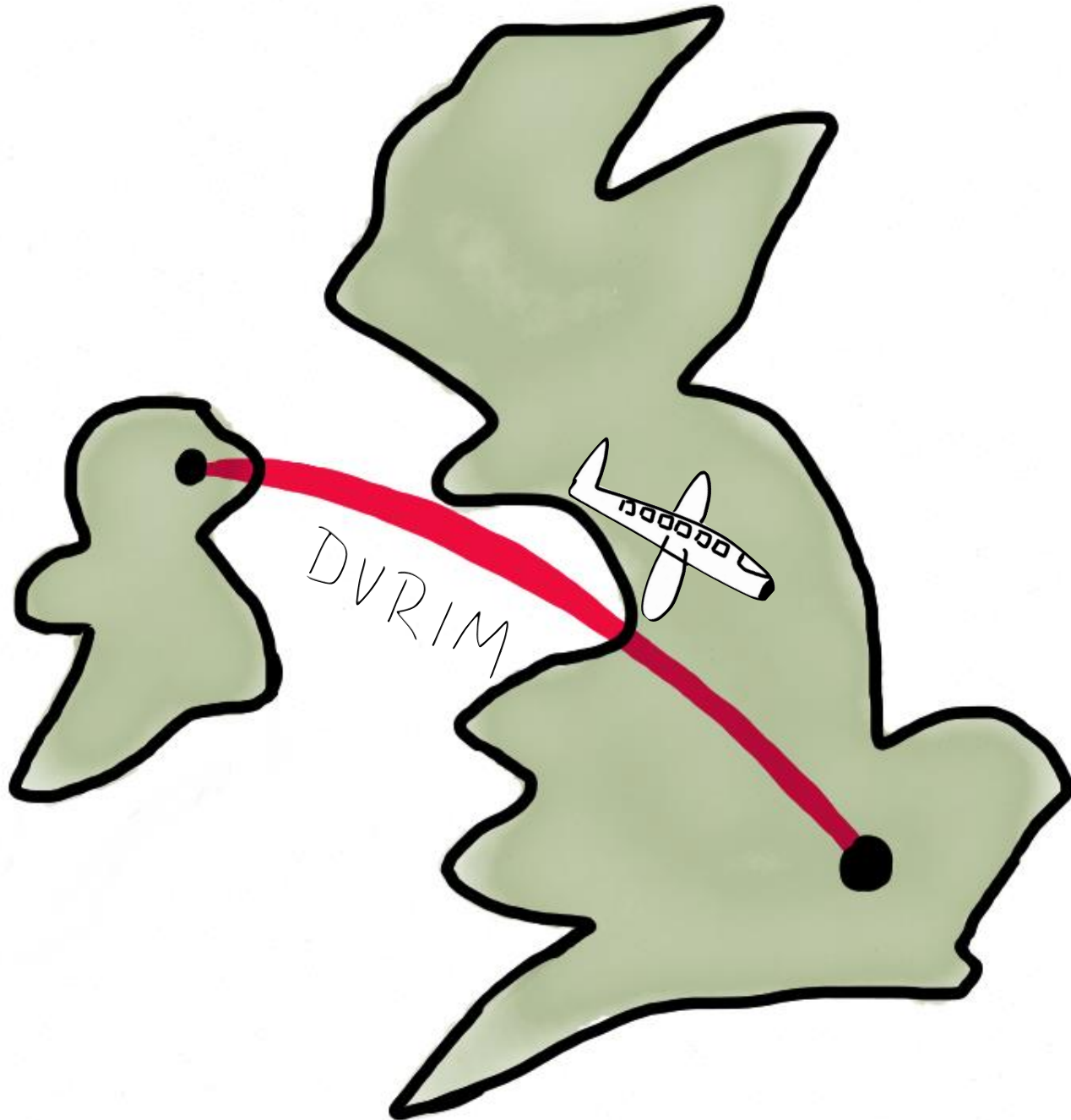


Barnardo's



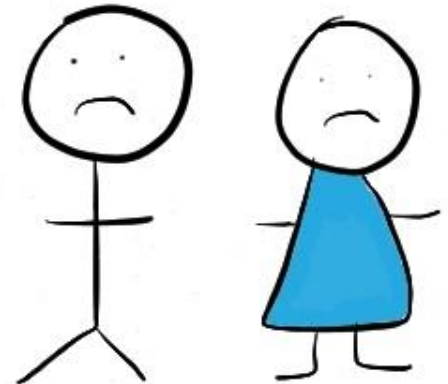
LM





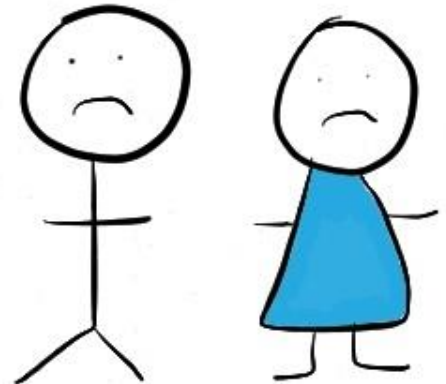
56%

Of their mothers had suffered Domestic Violence



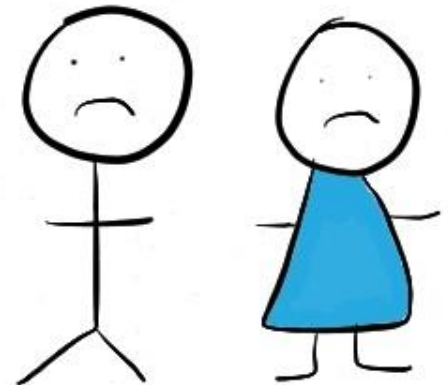
66%

Of the shaken baby cases there was domestic violence



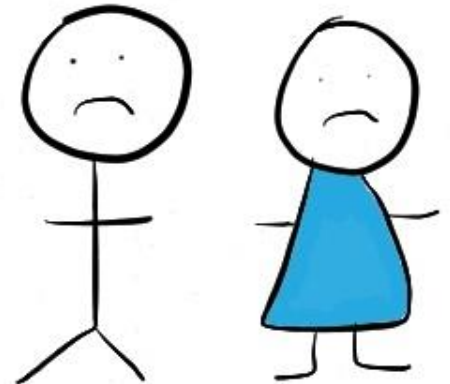
52%

Of Child protection cases involve domestic violence



74%

Of children on the child protection register were living in households with domestic violence present.



Believe in
children



Barnardo's

Belfast, NI

Total population – 1.8m

BME population – 32k

BME % - 1.8%



London, England

Total population – 8.2m

BME population – 4.5m

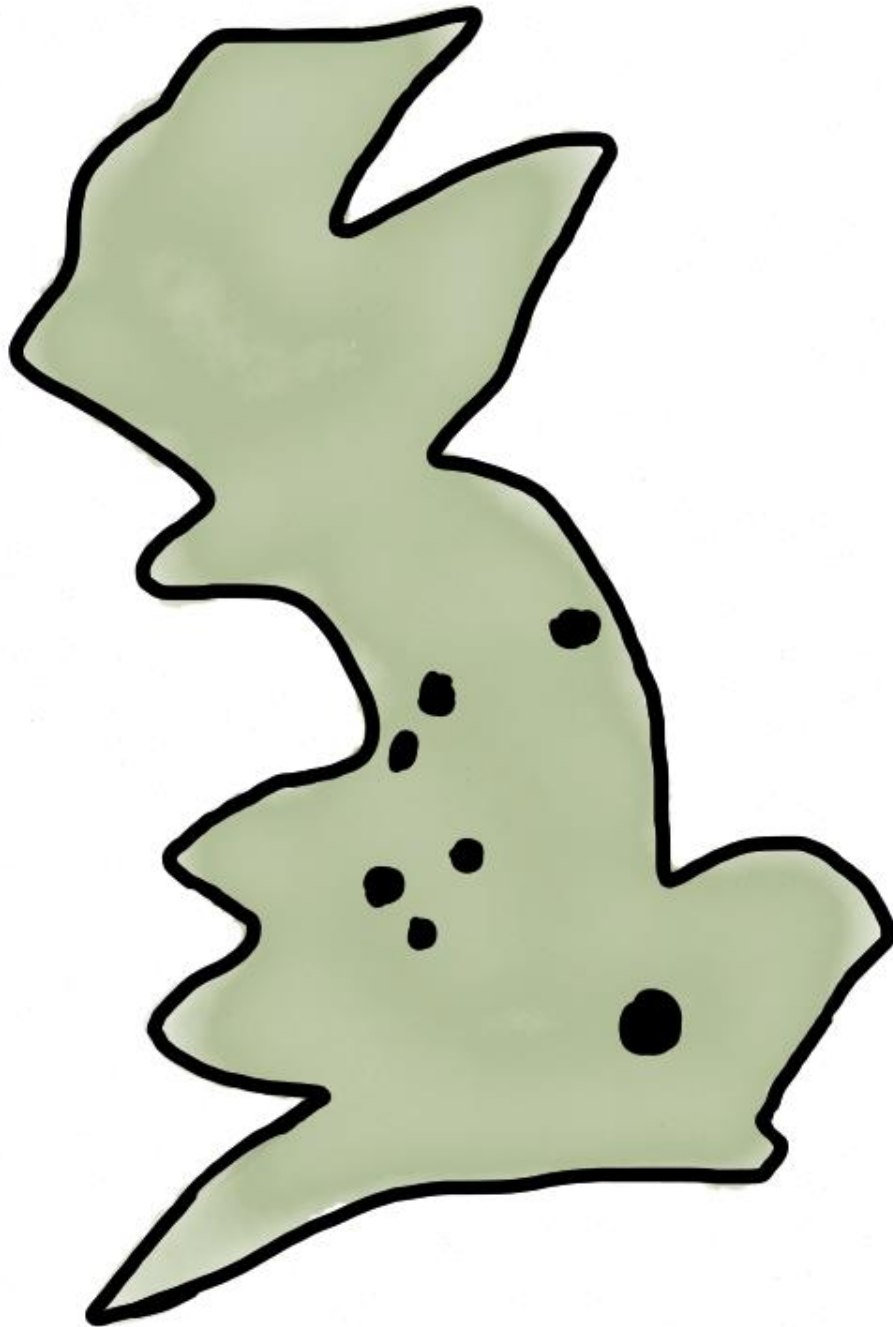
BME % - 55%

Believe in
children

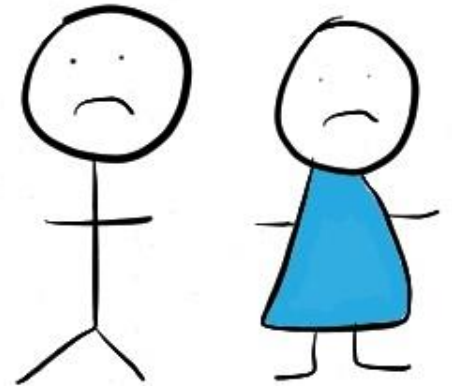


Barnardo's

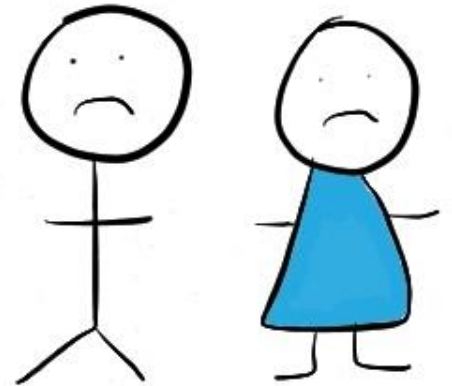




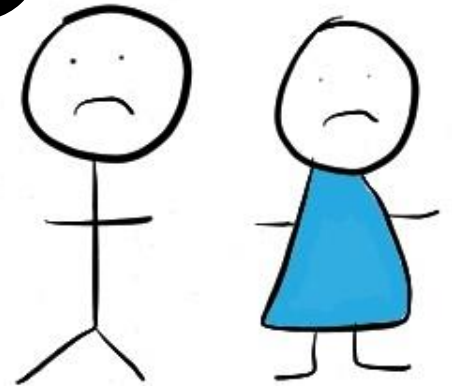
GENDER SPECIFIC



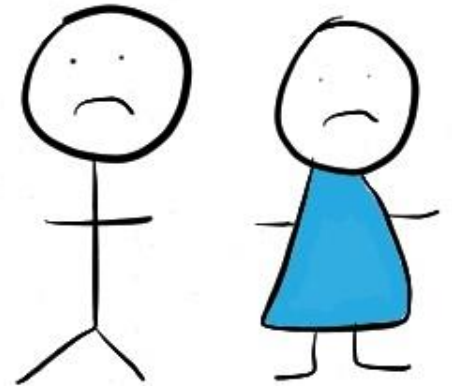
MULTI AGENCY



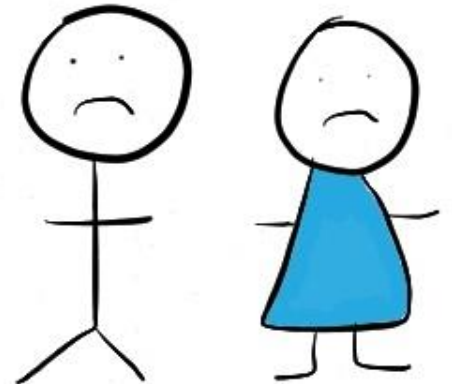
DOMESTIC ABUSE CHILD FOCUSED



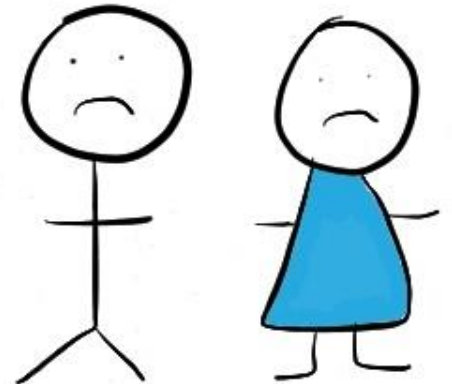
CHILD DEATH ENQUIRIES



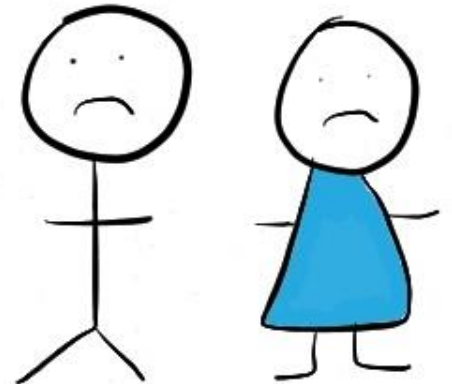
HOMICIDE REVIEWS



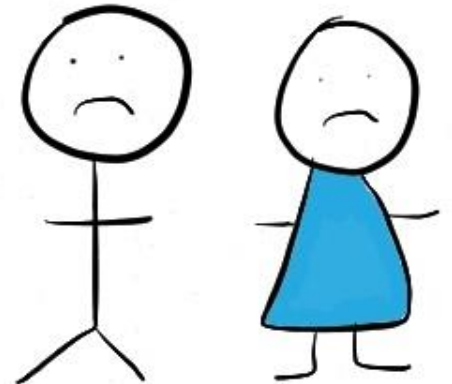
IMPACT

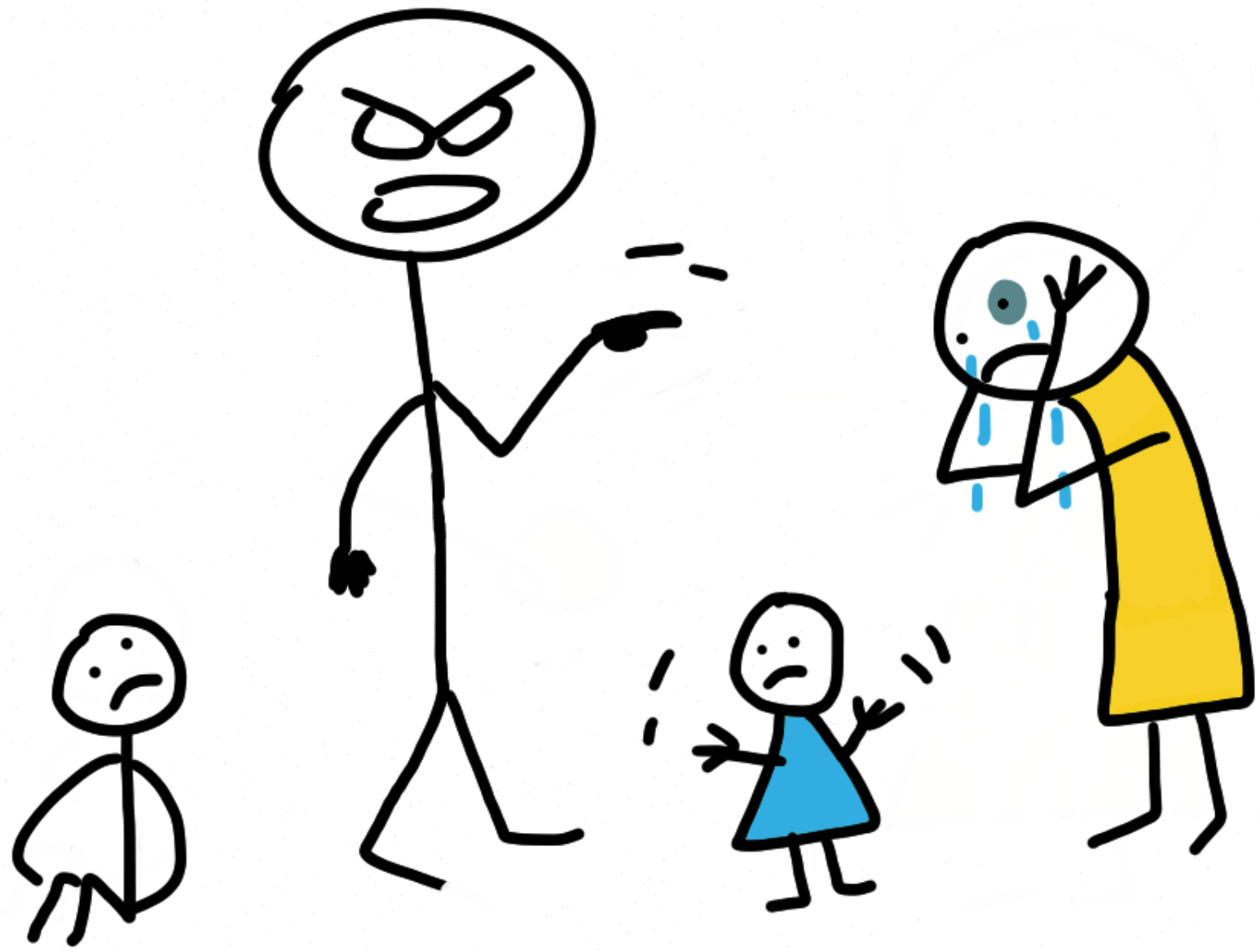


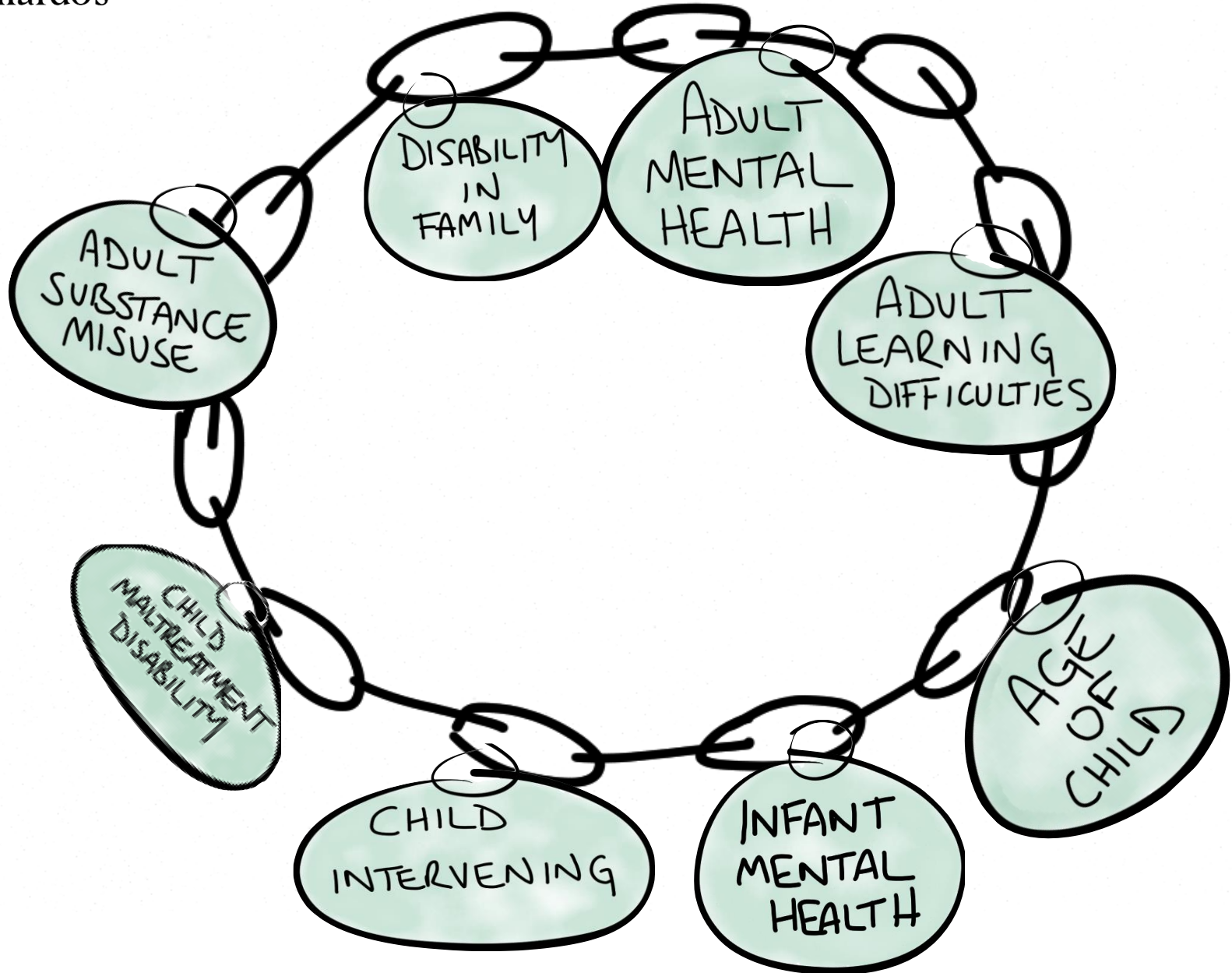
KNOWLEDGE

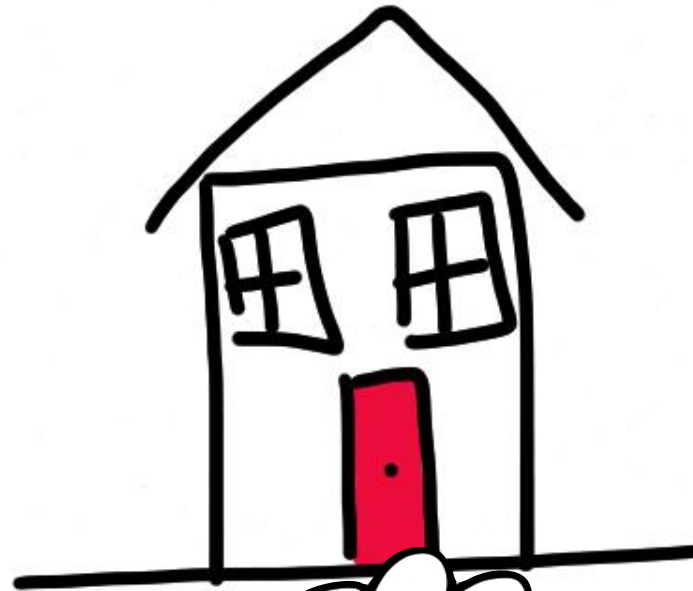
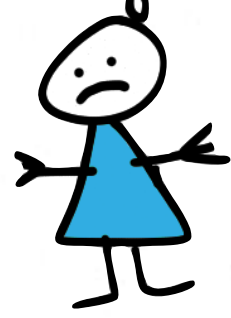
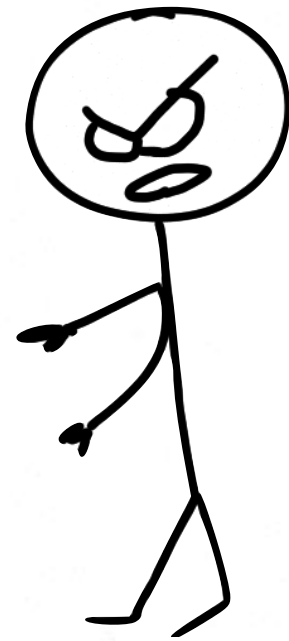


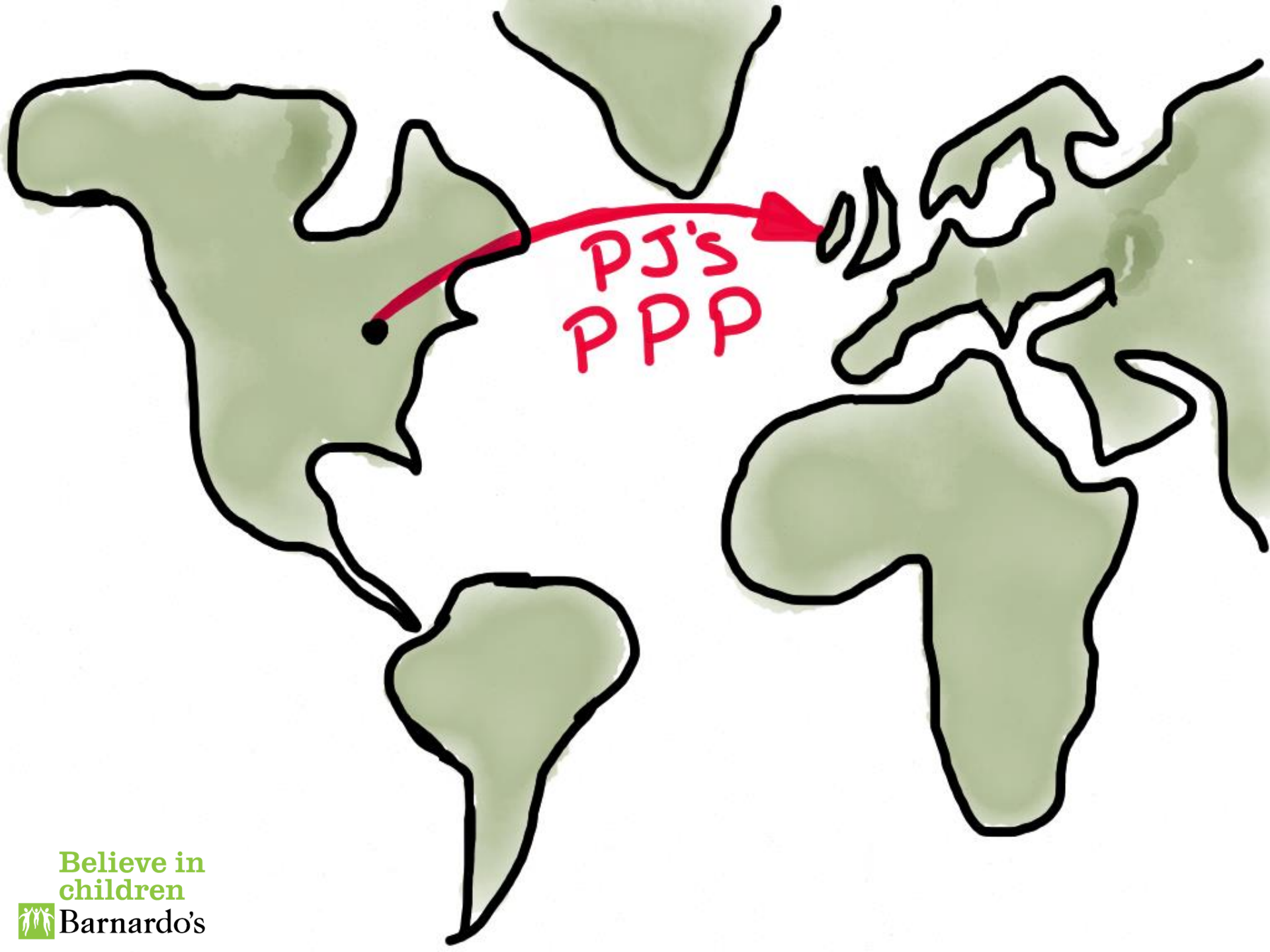
DYNAMICS











PJ'S
PPP

Believe in
children



Barnardo's

QUESTION: Level of risk: Domestic violence & CSF: Level 1 (Threats of harm only with additional notes)

Victim & abuser with additional notes
 CSF: Level 1 (Threats of harm only with additional notes)
 Address & behavior with additional notes
 CSF: Level 1 (Threats of harm only with additional notes)
 Address & behavior with additional notes
 CSF: Level 1 (Threats of harm only with additional notes)

Address & Behavior

1 - 3 major incidents of physical violence which were short in duration
 Victim did not seek medical treatment
 Intense verbal abuse

Child's Emotional Wellbeing

Child was not drawn into behavior
 Control by abuser is not intense

Relationships

Child neither relationship is nurturing, protective and stable
 Significant other is child's IS - positive and nurturing relationship

Abuse

Presence of child was a potential for the abuse
 A lesser attempt to establish the abuse and violence

Abuse

A lesser involves positive response and is willing to seek support for abusive behavior
 Victim has positive support from family, friends & community
 Victim appears to be okay (not worn down by the abuse)

Abuse

Victim sought appropriate support and/or is willing to accept help from other agencies

Child (Black, Minority, Ethnic) - General Assessment of Risk

- 26 answered the following questions:
 1) Did you do...
 2) Cannot speak, read or write English
 3) Poor but the "Baker" neighborhood
 4) Lack of strong social networks
 5) Live in temporary housing
 6) In living with the poverty line
 7) Has a child who is of a different appearance and culture to them
 8) Is living in a close-knit community in London
 9) Has a perspective on parenting practices supported by culture or faith which are not in line with UK law & national norms
 10) Recognize partner's faith or community health as all powerful
 11) Put a very high value on preserving family "honor"
 12) Will you your partner...
 13) Is inappropriate relation to partner necessary
 14) Has strong allegiance to a group or gang

These are the questions included in the 2011 checklist. Updated in 2015. See 2.0.0.0.0.0.



QUESTION: Level of risk: Domestic violence & CSF: Level 2 (Threats of harm only with additional notes)

Victim & abuser with additional notes
 CSF: Level 2 (Threats of harm only with additional notes)
 Address & behavior with additional notes
 CSF: Level 2 (Threats of harm only with additional notes)
 Address & behavior with additional notes
 CSF: Level 2 (Threats of harm only with additional notes)

Address & Behavior

History of severe moderate incidents of physical violence short duration
 Victim washed minor injuries, medical attention not sought
 Evidence of intimidation, bullying behavior - pushing, slaps, poking, staring, victim not not towards child's - destruction of property

Child's Emotional Wellbeing

Child was verbal about emotional use of derogatory language
 Risk of isolation - Abuser attempts to control victim's activities, movements & contact with others

Relationships

Child neither relationship is nurturing, protective and stable
 Significant other is child's IS - positive and nurturing relationship

Abuse

Presence of child was a potential for the abuse
 A lesser attempt to establish the abuse and violence

Abuse

A lesser involves positive response and is willing to seek support for abusive behavior
 Victim has positive support from family, friends & community
 Victim appears to be okay (not worn down by the abuse)

Abuse

Victim sought appropriate support and/or is willing to accept help from other agencies

Child (Black, Minority, Ethnic) - General Assessment of Risk

- 26 answered the following questions:
 1) Did you do...
 2) Cannot speak, read or write English
 3) Poor but the "Baker" neighborhood
 4) Lack of strong social networks
 5) Live in temporary housing
 6) In living with the poverty line
 7) Has a child who is of a different appearance and culture to them
 8) Is living in a close-knit community in London
 9) Has a perspective on parenting practices supported by culture or faith which are not in line with UK law & national norms
 10) Recognize partner's faith or community health as all powerful
 11) Put a very high value on preserving family "honor"
 12) Will you your partner...
 13) Is inappropriate relation to partner necessary
 14) Has strong allegiance to a group or gang



QUESTION: Level of risk: Domestic violence & CSF: Level 3 (Threats of harm only with additional notes)

Victim & abuser with additional notes
 CSF: Level 3 (Threats of harm only with additional notes)
 Address & behavior with additional notes
 CSF: Level 3 (Threats of harm only with additional notes)
 Address & behavior with additional notes
 CSF: Level 3 (Threats of harm only with additional notes)

Address & Behavior

History of severe moderate incidents of physical violence in family, threatening to severely derogatory and/or abusive - history of previous assaults
 Victim and/or children indicate that they are frightened of abuser - put in fear by looks, actions, gestures and/or threats of property destruction & psychological abuse
 Abuser's aggression - repeated attempts to establish control over victim & child
 Bullying involvement of other children - increased risk of isolation
 Abuse through the use of leading words, threatening other

Child's Emotional Wellbeing

Abuser intimidating and establishment's protective orders - non-contact orders
 Victim required medical treatment but not sought or explanation for injuries impossible
 Requiring or being at request for police intervention
 Bullying of children over a period of time - constant criticism, scapegoat
 Threats of harm to mother and/or children
 Abuser's jealousy, possessiveness of abuser - threatening to end relationship
 Fearful of victim's reactions to abuser
 Abuser has history of assault, violence in previous relationships

Relationships

Child neither relationship is nurturing, protective and stable
 Significant other is child's IS - positive and nurturing relationship

Abuse

Presence of child was a potential for the abuse
 A lesser attempt to establish the abuse and violence

Abuse

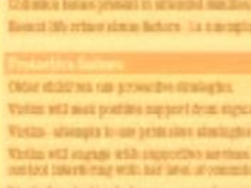
A lesser involves positive response and is willing to seek support for abusive behavior
 Victim has positive support from family, friends & community
 Victim appears to be okay (not worn down by the abuse)

Abuse

Victim sought appropriate support and/or is willing to accept help from other agencies

Child (Black, Minority, Ethnic) - General Assessment of Risk

- 26 answered the following questions:
 1) Did you do...
 2) Cannot speak, read or write English
 3) Poor but the "Baker" neighborhood
 4) Lack of strong social networks
 5) Live in temporary housing
 6) In living with the poverty line
 7) Has a child who is of a different appearance and culture to them
 8) Is living in a close-knit community in London
 9) Has a perspective on parenting practices supported by culture or faith which are not in line with UK law & national norms
 10) Recognize partner's faith or community health as all powerful
 11) Put a very high value on preserving family "honor"
 12) Will you your partner...
 13) Is inappropriate relation to partner necessary
 14) Has strong allegiance to a group or gang



QUESTION: Level of risk: Domestic violence & CSF: Level 4 (Threats of harm only with additional notes)

Victim & abuser with additional notes
 CSF: Level 4 (Threats of harm only with additional notes)
 Address & behavior with additional notes
 CSF: Level 4 (Threats of harm only with additional notes)
 Address & behavior with additional notes
 CSF: Level 4 (Threats of harm only with additional notes)

Address & Behavior

History of severe moderate incidents of physical violence in family, threatening to severely derogatory and/or abusive - history of previous assaults
 Victim and/or children indicate that they are frightened of abuser - put in fear by looks, actions, gestures and/or threats of property destruction & psychological abuse
 Abuser's aggression - repeated attempts to establish control over victim & child
 Bullying involvement of other children - increased risk of isolation
 Abuse through the use of leading words, threatening other

Child's Emotional Wellbeing

Abuser intimidating and establishment's protective orders - non-contact orders
 Victim required medical treatment but not sought or explanation for injuries impossible
 Requiring or being at request for police intervention
 Bullying of children over a period of time - constant criticism, scapegoat
 Threats of harm to mother and/or children
 Abuser's jealousy, possessiveness of abuser - threatening to end relationship
 Fearful of victim's reactions to abuser
 Abuser has history of assault, violence in previous relationships

Relationships

Child neither relationship is nurturing, protective and stable
 Significant other is child's IS - positive and nurturing relationship

Abuse

Presence of child was a potential for the abuse
 A lesser attempt to establish the abuse and violence

Abuse

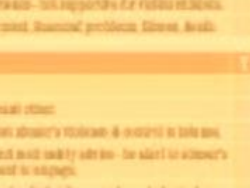
A lesser involves positive response and is willing to seek support for abusive behavior
 Victim has positive support from family, friends & community
 Victim appears to be okay (not worn down by the abuse)

Abuse

Victim sought appropriate support and/or is willing to accept help from other agencies

Child (Black, Minority, Ethnic) - General Assessment of Risk

- 26 answered the following questions:
 1) Did you do...
 2) Cannot speak, read or write English
 3) Poor but the "Baker" neighborhood
 4) Lack of strong social networks
 5) Live in temporary housing
 6) In living with the poverty line
 7) Has a child who is of a different appearance and culture to them
 8) Is living in a close-knit community in London
 9) Has a perspective on parenting practices supported by culture or faith which are not in line with UK law & national norms
 10) Recognize partner's faith or community health as all powerful
 11) Put a very high value on preserving family "honor"
 12) Will you your partner...
 13) Is inappropriate relation to partner necessary
 14) Has strong allegiance to a group or gang



QUESTION: Level of risk: Domestic violence & CSF: Level 5 (Threats of harm only with additional notes)

Victim & abuser with additional notes
 CSF: Level 5 (Threats of harm only with additional notes)
 Address & behavior with additional notes
 CSF: Level 5 (Threats of harm only with additional notes)
 Address & behavior with additional notes
 CSF: Level 5 (Threats of harm only with additional notes)

Address & Behavior

History of severe moderate incidents of physical violence in family, threatening to severely derogatory and/or abusive - history of previous assaults
 Victim and/or children indicate that they are frightened of abuser - put in fear by looks, actions, gestures and/or threats of property destruction & psychological abuse
 Abuser's aggression - repeated attempts to establish control over victim & child
 Bullying involvement of other children - increased risk of isolation
 Abuse through the use of leading words, threatening other

Child's Emotional Wellbeing

Abuser intimidating and establishment's protective orders - non-contact orders
 Victim required medical treatment but not sought or explanation for injuries impossible
 Requiring or being at request for police intervention
 Bullying of children over a period of time - constant criticism, scapegoat
 Threats of harm to mother and/or children
 Abuser's jealousy, possessiveness of abuser - threatening to end relationship
 Fearful of victim's reactions to abuser
 Abuser has history of assault, violence in previous relationships

Relationships

Child neither relationship is nurturing, protective and stable
 Significant other is child's IS - positive and nurturing relationship

Abuse

Presence of child was a potential for the abuse
 A lesser attempt to establish the abuse and violence

Abuse

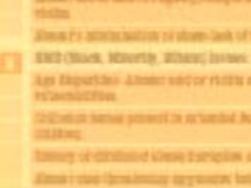
A lesser involves positive response and is willing to seek support for abusive behavior
 Victim has positive support from family, friends & community
 Victim appears to be okay (not worn down by the abuse)

Abuse

Victim sought appropriate support and/or is willing to accept help from other agencies

Child (Black, Minority, Ethnic) - General Assessment of Risk

- 26 answered the following questions:
 1) Did you do...
 2) Cannot speak, read or write English
 3) Poor but the "Baker" neighborhood
 4) Lack of strong social networks
 5) Live in temporary housing
 6) In living with the poverty line
 7) Has a child who is of a different appearance and culture to them
 8) Is living in a close-knit community in London
 9) Has a perspective on parenting practices supported by culture or faith which are not in line with UK law & national norms
 10) Recognize partner's faith or community health as all powerful
 11) Put a very high value on preserving family "honor"
 12) Will you your partner...
 13) Is inappropriate relation to partner necessary
 14) Has strong allegiance to a group or gang



QUESTION: Level of risk: Domestic violence & CSF: Level 6 (Threats of harm only with additional notes)

Victim & abuser with additional notes
 CSF: Level 6 (Threats of harm only with additional notes)
 Address & behavior with additional notes
 CSF: Level 6 (Threats of harm only with additional notes)
 Address & behavior with additional notes
 CSF: Level 6 (Threats of harm only with additional notes)

Address & Behavior

History of severe moderate incidents of physical violence in family, threatening to severely derogatory and/or abusive - history of previous assaults
 Victim and/or children indicate that they are frightened of abuser - put in fear by looks, actions, gestures and/or threats of property destruction & psychological abuse
 Abuser's aggression - repeated attempts to establish control over victim & child
 Bullying involvement of other children - increased risk of isolation
 Abuse through the use of leading words, threatening other

Child's Emotional Wellbeing

Abuser intimidating and establishment's protective orders - non-contact orders
 Victim required medical treatment but not sought or explanation for injuries impossible
 Requiring or being at request for police intervention
 Bullying of children over a period of time - constant criticism, scapegoat
 Threats of harm to mother and/or children
 Abuser's jealousy, possessiveness of abuser - threatening to end relationship
 Fearful of victim's reactions to abuser
 Abuser has history of assault, violence in previous relationships

Relationships

Child neither relationship is nurturing, protective and stable
 Significant other is child's IS - positive and nurturing relationship

Abuse

Presence of child was a potential for the abuse
 A lesser attempt to establish the abuse and violence

Abuse

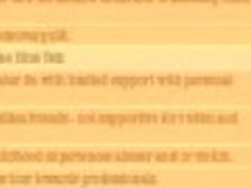
A lesser involves positive response and is willing to seek support for abusive behavior
 Victim has positive support from family, friends & community
 Victim appears to be okay (not worn down by the abuse)

Abuse

Victim sought appropriate support and/or is willing to accept help from other agencies

Child (Black, Minority, Ethnic) - General Assessment of Risk

- 26 answered the following questions:
 1) Did you do...
 2) Cannot speak, read or write English
 3) Poor but the "Baker" neighborhood
 4) Lack of strong social networks
 5) Live in temporary housing
 6) In living with the poverty line
 7) Has a child who is of a different appearance and culture to them
 8) Is living in a close-knit community in London
 9) Has a perspective on parenting practices supported by culture or faith which are not in line with UK law & national norms
 10) Recognize partner's faith or community health as all powerful
 11) Put a very high value on preserving family "honor"
 12) Will you your partner...
 13) Is inappropriate relation to partner necessary
 14) Has strong allegiance to a group or gang



TYPE 1: Level of risk: Moderate to High
CAF: Level 3 Threshold of need child with additional needs

Child has a history with additional needs that requires extra protection against exposure to violence
 Child may live in an area of high violence risk. The parent or carer is at risk of not using domestic violence helpline.

History of Domestic Violence

1-3 further incidents of physical violence which were short in duration
 Victim did not seek medical treatment
 Victim no verbal abuse

Risk Factors: Domestic Violence

Child was not taken into custody
 Control by abuser is not intense

Protective Factors

Child mother relationship is strengthening protective and stable
 Significant other in child's life - positive and nurturing relationship
 Friends of child live in a neutral or safe area
 A safer simple accessibility to abuse and violence
 A safer individual gender reform and is willing to seek support for abusive behaviour
 Victim has positive support from family, friends & community
 Victim has medical support
 Victim has legal support
 Victim has financial support
 Victim has social support
 Victim has emotional support

Risk Factors: Minority, Ethnic Issues, Areas of Need

- At all present the following questions (if the parent...):
 1. Cannot speak, read or write English
 2. From the 'BME' or ethnicities
 3. Lack strong social networks
 4. Live in temporary housing
 5. Is being below the poverty line
 6. Has a child with a different appearance and culture to family
 7. Is living in a new area or community in London
 8. Has a perspective on parenting practices underpinned by culture or faith which are not in line with UK law & national norms
 9. Recognises mother is in a community with a need for protection
 10. Finds a very high value in protecting family honour
 11. If the young person...
 - is in employment or wishes to enter employment
 - is being subjected to a group or gang



TYPE 2: Level of risk: Moderate to High
CAF: Level 3 Threshold of need child with additional needs

Child has a history with additional needs. If protected and protection against exposure to violence is not in place, the parent or carer is at risk of not using domestic violence helpline.

History of Domestic Violence

History of physical moderate incidents of physical violence short duration
 Victim sought minor injuries - medical care taken not sought
 History of verbal abuse, but by the mother - positive steps: putting things in victim but not severely child life - restriction of property

Risk Factors: Domestic Violence

Victim no verbal abuse - emotional use of derogatory language
 Risk of isolation - abuser attempts to control victim's activities, movements & contact with others

Risk Factors: Minority, Ethnic Issues, Areas of Need

Child was not present to be taken during an incident but did not display trauma
 Potential lack of emotional abuse of children
RACE (Race, Ethnicity, Ethnic) Issues: See the Blue Box
 Disability issues within family - positive support networks
 Mental health issues - not packaged or worsened. Abuser or victim seeking appropriate help
 Age of abuser and/or victim - help
 Victim's protective strategies
 Victim's history of abuse - victim was not present to be taken during an incident
 Significant other in child's life - positive and nurturing relationship
 Older children use coping protective strategies
 Victim attempts to use protective strategies with older children
 Victim is prepared to take advice on safety issues
 Victim has brought into the risks to her child as posed by the abuser
 Victim has positive support from family, friends and community
 Abuser willing to engage in services to address his abusive behaviour

Barnardo's Domestic Violence Risk Identification Matrix

TYPE 3: Level of risk: Serious to High
CAF: Level 3 Threshold of need child with complex needs

Child has a history of child abuse or neglect. Child's history may include Section 17 but background information may be necessary if level of protection is not reached. Previous care placement. Child may appear under 16 or child may not appear to be at risk of being taken into care

History of Domestic Violence

History of serious and/or persistent physical violence in family, increasing to assault (knockout) and/or firearms - history of previous assaults
 Victim and/or children indicate that they are frightened of abuser - put in fear by looks, actions, postures and destruction of property (material & psychological abuse)
 Sexual aggression - repeated, separate incidents involving explicit control
 Violating/breaching of mother's rights - increased risk of isolation
 Abuse through the use of leading social networking sites
 Abuser breaching legal notification of protective orders - non-compliance orders
 Victim required medical treatment but not sought or explanation for injuries implausible
 Requiring or frequent requests for police intervention
 Intensity of violence occur in presence of children - consider duration of exposure
 Threats of harm to mother and/or children
 Abuser has previous involvement of abuser - demonstrating a real history
 Financial control maintained by abuser
 Abuser has history of domestic violence in previous relationships

Risk Factors: Domestic Violence

Mental health issues - abuser and/or victim - abuse concerns
 Substance abuse by abuser and/or victim - abuse concerns
 Abuser's and/or victim's inability to access mental health support
 Strong likelihood of emotional abuse of child - may display behavioural problems
 Child may be unable to address safety concerns due to fear or trauma caused by abuser
 Lack of safe signpost and other as a positive support to child
 Child contact issues - domestic abuse occurring in isolation
 Older children - additional - increased risk of becoming in abuse and entering abusive relationships
 Victim's protective strategies
 Victim's history of abuse - victim was not present to be taken during an incident
 Significant other in child's life - positive and nurturing relationship
 Older children use coping protective strategies
 Victim attempts to use protective strategies with older children
 Victim is prepared to take advice on safety issues

Risk Factors: Minority, Ethnic Issues, Areas of Need

Victim's protective strategies
 Victim's history of abuse - victim was not present to be taken during an incident
 Significant other in child's life - positive and nurturing relationship
 Older children use coping protective strategies
 Victim attempts to use protective strategies with older children
 Victim is prepared to take advice on safety issues
 Victim has brought into the risks to her child as posed by the abuser
 Victim has positive support from family, friends and community
 Abuser willing to engage in services to address his abusive behaviour

Protective Factors

Older children use protective strategies
 Victim will seek positive support from signpost and other
 Victim attempts to use protective strategies but abuser's violence & control is taking place
 Victim will engage with appropriate services and seek help when - be clear in victim's control concerning with her and/or child's safety to engage

TYPE 4: Level of risk: Serious to High
CAF: Level 3 Threshold of need child with complex needs

Child has a history of child abuse or neglect. Child's history may include Section 17 but background information may be necessary if level of protection is not reached. Previous care placement. Child may appear under 16 or child may not appear to be at risk of being taken into care

History of Domestic Violence

History of serious and/or persistent physical violence in family, increasing to assault (knockout) and/or firearms - history of previous assaults
 Victim and/or children indicate that they are frightened of abuser - put in fear by looks, actions, postures and destruction of property (material & psychological abuse)
 Sexual aggression - repeated, separate incidents involving explicit control
 Violating/breaching of mother's rights - increased risk of isolation
 Abuse through the use of leading social networking sites
 Abuser breaching legal notification of protective orders - non-compliance orders
 Victim required medical treatment but not sought or explanation for injuries implausible
 Requiring or frequent requests for police intervention
 Intensity of violence occur in presence of children - consider duration of exposure
 Threats of harm to mother and/or children
 Abuser has previous involvement of abuser - demonstrating a real history
 Financial control maintained by abuser
 Abuser has history of domestic violence in previous relationships

Risk Factors: Domestic Violence

Mental health issues - abuser and/or victim - abuse concerns
 Substance abuse by abuser and/or victim - abuse concerns
 Abuser's and/or victim's inability to access mental health support
 Strong likelihood of emotional abuse of child - may display behavioural problems
 Child may be unable to address safety concerns due to fear or trauma caused by abuser
 Lack of safe signpost and other as a positive support to child
 Child contact issues - domestic abuse occurring in isolation
 Older children - additional - increased risk of becoming in abuse and entering abusive relationships
 Victim's protective strategies
 Victim's history of abuse - victim was not present to be taken during an incident
 Significant other in child's life - positive and nurturing relationship
 Older children use coping protective strategies
 Victim attempts to use protective strategies with older children
 Victim is prepared to take advice on safety issues

Risk Factors: Minority, Ethnic Issues, Areas of Need

Victim's protective strategies
 Victim's history of abuse - victim was not present to be taken during an incident
 Significant other in child's life - positive and nurturing relationship
 Older children use coping protective strategies
 Victim attempts to use protective strategies with older children
 Victim is prepared to take advice on safety issues
 Victim has brought into the risks to her child as posed by the abuser
 Victim has positive support from family, friends and community
 Abuser willing to engage in services to address his abusive behaviour

Protective Factors

Older children use protective strategies
 Victim will seek positive support from signpost and other
 Victim attempts to use protective strategies but abuser's violence & control is taking place
 Victim will engage with appropriate services and seek help when - be clear in victim's control concerning with her and/or child's safety to engage

TYPE 5: Level of risk: Serious to High
CAF: Level 3 Threshold of need child with complex needs

Child has a history of child abuse or neglect. Child's history may include Section 17 but background information may be necessary if level of protection is not reached. Previous care placement. Child may appear under 16 or child may not appear to be at risk of being taken into care

History of Domestic Violence

History of serious and/or persistent physical violence in family, increasing to assault (knockout) and/or firearms - history of previous assaults
 Victim and/or children indicate that they are frightened of abuser - put in fear by looks, actions, postures and destruction of property (material & psychological abuse)
 Sexual aggression - repeated, separate incidents involving explicit control
 Violating/breaching of mother's rights - increased risk of isolation
 Abuse through the use of leading social networking sites
 Abuser breaching legal notification of protective orders - non-compliance orders
 Victim required medical treatment but not sought or explanation for injuries implausible
 Requiring or frequent requests for police intervention
 Intensity of violence occur in presence of children - consider duration of exposure
 Threats of harm to mother and/or children
 Abuser has previous involvement of abuser - demonstrating a real history
 Financial control maintained by abuser
 Abuser has history of domestic violence in previous relationships

Risk Factors: Domestic Violence

Mental health issues - abuser and/or victim - abuse concerns
 Substance abuse by abuser and/or victim - abuse concerns
 Abuser's and/or victim's inability to access mental health support
 Strong likelihood of emotional abuse of child - may display behavioural problems
 Child may be unable to address safety concerns due to fear or trauma caused by abuser
 Lack of safe signpost and other as a positive support to child
 Child contact issues - domestic abuse occurring in isolation
 Older children - additional - increased risk of becoming in abuse and entering abusive relationships
 Victim's protective strategies
 Victim's history of abuse - victim was not present to be taken during an incident
 Significant other in child's life - positive and nurturing relationship
 Older children use coping protective strategies
 Victim attempts to use protective strategies with older children
 Victim is prepared to take advice on safety issues

Risk Factors: Minority, Ethnic Issues, Areas of Need

Victim's protective strategies
 Victim's history of abuse - victim was not present to be taken during an incident
 Significant other in child's life - positive and nurturing relationship
 Older children use coping protective strategies
 Victim attempts to use protective strategies with older children
 Victim is prepared to take advice on safety issues
 Victim has brought into the risks to her child as posed by the abuser
 Victim has positive support from family, friends and community
 Abuser willing to engage in services to address his abusive behaviour

Protective Factors

Older children use protective strategies
 Victim will seek positive support from signpost and other
 Victim attempts to use protective strategies but abuser's violence & control is taking place
 Victim will engage with appropriate services and seek help when - be clear in victim's control concerning with her and/or child's safety to engage

TYPE 6: Level of risk: Serious to High
CAF: Level 3 Threshold of need child with complex needs

Child has a history of child abuse or neglect. Child's history may include Section 17 but background information may be necessary if level of protection is not reached. Previous care placement. Child may appear under 16 or child may not appear to be at risk of being taken into care

History of Domestic Violence

History of serious and/or persistent physical violence in family, increasing to assault (knockout) and/or firearms - history of previous assaults
 Victim and/or children indicate that they are frightened of abuser - put in fear by looks, actions, postures and destruction of property (material & psychological abuse)
 Sexual aggression - repeated, separate incidents involving explicit control
 Violating/breaching of mother's rights - increased risk of isolation
 Abuse through the use of leading social networking sites
 Abuser breaching legal notification of protective orders - non-compliance orders
 Victim required medical treatment but not sought or explanation for injuries implausible
 Requiring or frequent requests for police intervention
 Intensity of violence occur in presence of children - consider duration of exposure
 Threats of harm to mother and/or children
 Abuser has previous involvement of abuser - demonstrating a real history
 Financial control maintained by abuser
 Abuser has history of domestic violence in previous relationships

Risk Factors: Domestic Violence

Mental health issues - abuser and/or victim - abuse concerns
 Substance abuse by abuser and/or victim - abuse concerns
 Abuser's and/or victim's inability to access mental health support
 Strong likelihood of emotional abuse of child - may display behavioural problems
 Child may be unable to address safety concerns due to fear or trauma caused by abuser
 Lack of safe signpost and other as a positive support to child
 Child contact issues - domestic abuse occurring in isolation
 Older children - additional - increased risk of becoming in abuse and entering abusive relationships
 Victim's protective strategies
 Victim's history of abuse - victim was not present to be taken during an incident
 Significant other in child's life - positive and nurturing relationship
 Older children use coping protective strategies
 Victim attempts to use protective strategies with older children
 Victim is prepared to take advice on safety issues

Risk Factors: Minority, Ethnic Issues, Areas of Need

Victim's protective strategies
 Victim's history of abuse - victim was not present to be taken during an incident
 Significant other in child's life - positive and nurturing relationship
 Older children use coping protective strategies
 Victim attempts to use protective strategies with older children
 Victim is prepared to take advice on safety issues
 Victim has brought into the risks to her child as posed by the abuser
 Victim has positive support from family, friends and community
 Abuser willing to engage in services to address his abusive behaviour

Protective Factors

Older children use protective strategies
 Victim will seek positive support from signpost and other
 Victim attempts to use protective strategies but abuser's violence & control is taking place
 Victim will engage with appropriate services and seek help when - be clear in victim's control concerning with her and/or child's safety to engage

TYPE 7: Level of risk: Serious to High
CAF: Level 3 Threshold of need child with complex needs

Child has a history of child abuse or neglect. Child's history may include Section 17 but background information may be necessary if level of protection is not reached. Previous care placement. Child may appear under 16 or child may not appear to be at risk of being taken into care

History of Domestic Violence

History of serious and/or persistent physical violence in family, increasing to assault (knockout) and/or firearms - history of previous assaults
 Victim and/or children indicate that they are frightened of abuser - put in fear by looks, actions, postures and destruction of property (material & psychological abuse)
 Sexual aggression - repeated, separate incidents involving explicit control
 Violating/breaching of mother's rights - increased risk of isolation
 Abuse through the use of leading social networking sites
 Abuser breaching legal notification of protective orders - non-compliance orders
 Victim required medical treatment but not sought or explanation for injuries implausible
 Requiring or frequent requests for police intervention
 Intensity of violence occur in presence of children - consider duration of exposure
 Threats of harm to mother and/or children
 Abuser has previous involvement of abuser - demonstrating a real history
 Financial control maintained by abuser
 Abuser has history of domestic violence in previous relationships

Risk Factors: Domestic Violence

Mental health issues - abuser and/or victim - abuse concerns
 Substance abuse by abuser and/or victim - abuse concerns
 Abuser's and/or victim's inability to access mental health support
 Strong likelihood of emotional abuse of child - may display behavioural problems
 Child may be unable to address safety concerns due to fear or trauma caused by abuser
 Lack of safe signpost and other as a positive support to child
 Child contact issues - domestic abuse occurring in isolation
 Older children - additional - increased risk of becoming in abuse and entering abusive relationships
 Victim's protective strategies
 Victim's history of abuse - victim was not present to be taken during an incident
 Significant other in child's life - positive and nurturing relationship
 Older children use coping protective strategies
 Victim attempts to use protective strategies with older children
 Victim is prepared to take advice on safety issues

Risk Factors: Minority, Ethnic Issues, Areas of Need

Victim's protective strategies
 Victim's history of abuse - victim was not present to be taken during an incident
 Significant other in child's life - positive and nurturing relationship
 Older children use coping protective strategies
 Victim attempts to use protective strategies with older children
 Victim is prepared to take advice on safety issues
 Victim has brought into the risks to her child as posed by the abuser
 Victim has positive support from family, friends and community
 Abuser willing to engage in services to address his abusive behaviour

Protective Factors

Older children use protective strategies
 Victim will seek positive support from signpost and other
 Victim attempts to use protective strategies but abuser's violence & control is taking place
 Victim will engage with appropriate services and seek help when - be clear in victim's control concerning with her and/or child's safety to engage

PROTECTIVE: Level of risk Moderate to low
C.A.P. Level 1 Threshold of need child with additional needs

Child has a brother with additional needs
 GP requires steps for brother support
 Child's mother has a brother with additional needs
 The mother is a single parent with a child in care
 Child's mother has a brother with additional needs

Reduction of Domestic Violence T S

1. A history of incidents of physical violence which were short in duration
 Victim did not seek medical treatment
 Increase verbal abuse

Risk Factors/Potential Vulnerabilities T S

Child's mother was not aware of the risk
 Child's mother is not aware of the risk

Protective Factors T S

Child's mother relationship is positive, supportive and stable
 Significant other in child's life - positive and nurturing relationship
 Presence of child's mother is a restraint for the abuser
 A lower alcohol consumption for abuser and victim
 A lower income permits recovery and is willing to seek support for abuser's behaviour
 Victim has positive support from family/friends & community
 Victim appears emotionally strong (not worn-down by the abuser)
 Victim sought appropriate support and/or is willing to accept help from other agencies

EMK (Black, Minority, Ethnic) Issues: Address all issues

- 1. All present the following questions (check each one):
 - 1. Cannot speak, read or write English
 - 2. Does not know the value of money
 - 3. Lacks strong social networks
 - 4. Lives in temporary housing
 - 5. Is trying to live on a poverty line
 - 6. Has a child who is of a different appearance and culture to them
 - 7. Is living in a slow-growth community in London
- 2. Has a perspective on parenting practices underpinned by culture or faith which are not in line with UK law & national norms
- 3. Recognises father's role in community as a parent
- 4. Holds a very high value on preserving family honour and the young person...
 - 1) is unapproachable in relation to his/her sexuality
 - 2) has strong allegiance to a group or gang

See and follow the guidance, available for all EMK workers, available for all EMK workers

PROTECTIVE: Level of risk Moderate to low
C.A.P. Level 1 Threshold of need child with additional needs

Child has a brother with additional needs
 GP requires steps for brother support
 Child's mother has a brother with additional needs
 The mother is a single parent with a child in care
 Child's mother has a brother with additional needs

Reduction of Domestic Violence T S

History of minor incidents of physical violence short duration
 Victim sought minor injuries/medical attention not sought
 Reduction of verbal/abuse, holding abuser - pushing danger
 Seeking support in relation to not severely distressed - destruction of property

Risk Factors/Potential Vulnerabilities T S

Child's mother was not aware of the risk
 Child's mother is not aware of the risk

Protective Factors T S

Child's mother relationship is positive, supportive and stable
 Significant other in child's life - positive and nurturing relationship
 Presence of child's mother is a restraint for the abuser
 A lower alcohol consumption for abuser and victim
 A lower income permits recovery and is willing to seek support for abuser's behaviour
 Victim has positive support from family/friends & community
 Victim appears emotionally strong (not worn-down by the abuser)
 Victim sought appropriate support and/or is willing to accept help from other agencies

Protective Factors T S

Child's mother relationship is positive, supportive and stable
 Significant other in child's life - positive and nurturing relationship
 Presence of child's mother is a restraint for the abuser
 A lower alcohol consumption for abuser and victim
 A lower income permits recovery and is willing to seek support for abuser's behaviour
 Victim has positive support from family/friends & community
 Victim appears emotionally strong (not worn-down by the abuser)
 Victim sought appropriate support and/or is willing to accept help from other agencies

Barnardo's Domestic Violence Risk Identification Matrix

PROTECTIVE: Level of risk Moderate to low
C.A.P. Level 1 Threshold of need child with additional needs

Child has a brother with additional needs
 GP requires steps for brother support
 Child's mother has a brother with additional needs
 The mother is a single parent with a child in care
 Child's mother has a brother with additional needs

Reduction of Domestic Violence T S

History of serious and/or multiple physical violence in family, increasing in severity frequency and/or duration - history of previous assaults
 Victim and/or children believe that they are at risk of serious harm - put in fear by looks, actions, gestures and destruction of property, possession and personal belongings
 Building relationship of trust & safety - increased risk of isolation
 Abuse through the use of leading social networking sites

Risk Factors/Potential Vulnerabilities T S

Abuser breaching bail conditions or protective orders - non-contact orders
 Victim requested medical treatment not sought or explanation for requests explainable
 Reversing or trying to reverse the police intervention
 History of violence over a period of months - number duration of episodes
 Threats of harm to mother and/or children
 Abuser's primary motivation for abuse - demonstrating a total lack of empathy
 Physical control established by abuser
 Abuser has history of domestic violence in previous relationships

Risk Factors/Potential Vulnerabilities T S

Mental health issues - abuser and/or victim, raise concerns
 Substance abuse by abuser and/or victim, raise concerns
 Abuser's alcohol or drug use, raise concerns
 Child's mother is not aware of the risk
 Child's mother is not aware of the risk
 Child's mother is not aware of the risk
 Child's mother is not aware of the risk

Protective Factors T S

Child's mother relationship is positive, supportive and stable
 Significant other in child's life - positive and nurturing relationship
 Presence of child's mother is a restraint for the abuser
 A lower alcohol consumption for abuser and victim
 A lower income permits recovery and is willing to seek support for abuser's behaviour
 Victim has positive support from family/friends & community
 Victim appears emotionally strong (not worn-down by the abuser)
 Victim sought appropriate support and/or is willing to accept help from other agencies

Protective Factors T S

Child's mother relationship is positive, supportive and stable
 Significant other in child's life - positive and nurturing relationship
 Presence of child's mother is a restraint for the abuser
 A lower alcohol consumption for abuser and victim
 A lower income permits recovery and is willing to seek support for abuser's behaviour
 Victim has positive support from family/friends & community
 Victim appears emotionally strong (not worn-down by the abuser)
 Victim sought appropriate support and/or is willing to accept help from other agencies

PROTECTIVE: Level of risk Serious to high
C.A.P. Level 2 Threshold of need child with complex needs

Child has a brother with additional needs
 GP requires steps for brother support
 Child's mother has a brother with additional needs
 The mother is a single parent with a child in care
 Child's mother has a brother with additional needs

Reduction of Domestic Violence T S

History of serious and/or multiple physical violence in family, increasing in severity frequency and/or duration - history of previous assaults
 Victim and/or children believe that they are at risk of serious harm - put in fear by looks, actions, gestures and destruction of property, possession and personal belongings
 Building relationship of trust & safety - increased risk of isolation
 Abuse through the use of leading social networking sites

Risk Factors/Potential Vulnerabilities T S

Abuser breaching bail conditions or protective orders - non-contact orders
 Victim requested medical treatment not sought or explanation for requests explainable
 Reversing or trying to reverse the police intervention
 History of violence over a period of months - number duration of episodes
 Threats of harm to mother and/or children
 Abuser's primary motivation for abuse - demonstrating a total lack of empathy
 Physical control established by abuser
 Abuser has history of domestic violence in previous relationships

Risk Factors/Potential Vulnerabilities T S

Mental health issues - abuser and/or victim, raise concerns
 Substance abuse by abuser and/or victim, raise concerns
 Abuser's alcohol or drug use, raise concerns
 Child's mother is not aware of the risk
 Child's mother is not aware of the risk
 Child's mother is not aware of the risk
 Child's mother is not aware of the risk

Protective Factors T S

Child's mother relationship is positive, supportive and stable
 Significant other in child's life - positive and nurturing relationship
 Presence of child's mother is a restraint for the abuser
 A lower alcohol consumption for abuser and victim
 A lower income permits recovery and is willing to seek support for abuser's behaviour
 Victim has positive support from family/friends & community
 Victim appears emotionally strong (not worn-down by the abuser)
 Victim sought appropriate support and/or is willing to accept help from other agencies

Protective Factors T S

Child's mother relationship is positive, supportive and stable
 Significant other in child's life - positive and nurturing relationship
 Presence of child's mother is a restraint for the abuser
 A lower alcohol consumption for abuser and victim
 A lower income permits recovery and is willing to seek support for abuser's behaviour
 Victim has positive support from family/friends & community
 Victim appears emotionally strong (not worn-down by the abuser)
 Victim sought appropriate support and/or is willing to accept help from other agencies

PROTECTIVE: Level of risk Serious to high
C.A.P. Level 2 Threshold of need child with complex needs

Child has a brother with additional needs
 GP requires steps for brother support
 Child's mother has a brother with additional needs
 The mother is a single parent with a child in care
 Child's mother has a brother with additional needs

Reduction of Domestic Violence T S

History of serious and/or multiple physical violence in family, increasing in severity frequency and/or duration - history of previous assaults
 Victim and/or children believe that they are at risk of serious harm - put in fear by looks, actions, gestures and destruction of property, possession and personal belongings
 Building relationship of trust & safety - increased risk of isolation
 Abuse through the use of leading social networking sites

Risk Factors/Potential Vulnerabilities T S

Abuser breaching bail conditions or protective orders - non-contact orders
 Victim requested medical treatment not sought or explanation for requests explainable
 Reversing or trying to reverse the police intervention
 History of violence over a period of months - number duration of episodes
 Threats of harm to mother and/or children
 Abuser's primary motivation for abuse - demonstrating a total lack of empathy
 Physical control established by abuser
 Abuser has history of domestic violence in previous relationships

Risk Factors/Potential Vulnerabilities T S

Mental health issues - abuser and/or victim, raise concerns
 Substance abuse by abuser and/or victim, raise concerns
 Abuser's alcohol or drug use, raise concerns
 Child's mother is not aware of the risk
 Child's mother is not aware of the risk
 Child's mother is not aware of the risk
 Child's mother is not aware of the risk

Protective Factors T S

Child's mother relationship is positive, supportive and stable
 Significant other in child's life - positive and nurturing relationship
 Presence of child's mother is a restraint for the abuser
 A lower alcohol consumption for abuser and victim
 A lower income permits recovery and is willing to seek support for abuser's behaviour
 Victim has positive support from family/friends & community
 Victim appears emotionally strong (not worn-down by the abuser)
 Victim sought appropriate support and/or is willing to accept help from other agencies

Protective Factors T S

Child's mother relationship is positive, supportive and stable
 Significant other in child's life - positive and nurturing relationship
 Presence of child's mother is a restraint for the abuser
 A lower alcohol consumption for abuser and victim
 A lower income permits recovery and is willing to seek support for abuser's behaviour
 Victim has positive support from family/friends & community
 Victim appears emotionally strong (not worn-down by the abuser)
 Victim sought appropriate support and/or is willing to accept help from other agencies

PROTECTIVE: Level of risk Serious to high
C.A.P. Level 2 Threshold of need child with complex needs

Child has a brother with additional needs
 GP requires steps for brother support
 Child's mother has a brother with additional needs
 The mother is a single parent with a child in care
 Child's mother has a brother with additional needs

Reduction of Domestic Violence T S

History of serious and/or multiple physical violence in family, increasing in severity frequency and/or duration - history of previous assaults
 Victim and/or children believe that they are at risk of serious harm - put in fear by looks, actions, gestures and destruction of property, possession and personal belongings
 Building relationship of trust & safety - increased risk of isolation
 Abuse through the use of leading social networking sites

Risk Factors/Potential Vulnerabilities T S

Abuser breaching bail conditions or protective orders - non-contact orders
 Victim requested medical treatment not sought or explanation for requests explainable
 Reversing or trying to reverse the police intervention
 History of violence over a period of months - number duration of episodes
 Threats of harm to mother and/or children
 Abuser's primary motivation for abuse - demonstrating a total lack of empathy
 Physical control established by abuser
 Abuser has history of domestic violence in previous relationships

Risk Factors/Potential Vulnerabilities T S

Mental health issues - abuser and/or victim, raise concerns
 Substance abuse by abuser and/or victim, raise concerns
 Abuser's alcohol or drug use, raise concerns
 Child's mother is not aware of the risk
 Child's mother is not aware of the risk
 Child's mother is not aware of the risk
 Child's mother is not aware of the risk

Protective Factors T S

Child's mother relationship is positive, supportive and stable
 Significant other in child's life - positive and nurturing relationship
 Presence of child's mother is a restraint for the abuser
 A lower alcohol consumption for abuser and victim
 A lower income permits recovery and is willing to seek support for abuser's behaviour
 Victim has positive support from family/friends & community
 Victim appears emotionally strong (not worn-down by the abuser)
 Victim sought appropriate support and/or is willing to accept help from other agencies

Protective Factors T S

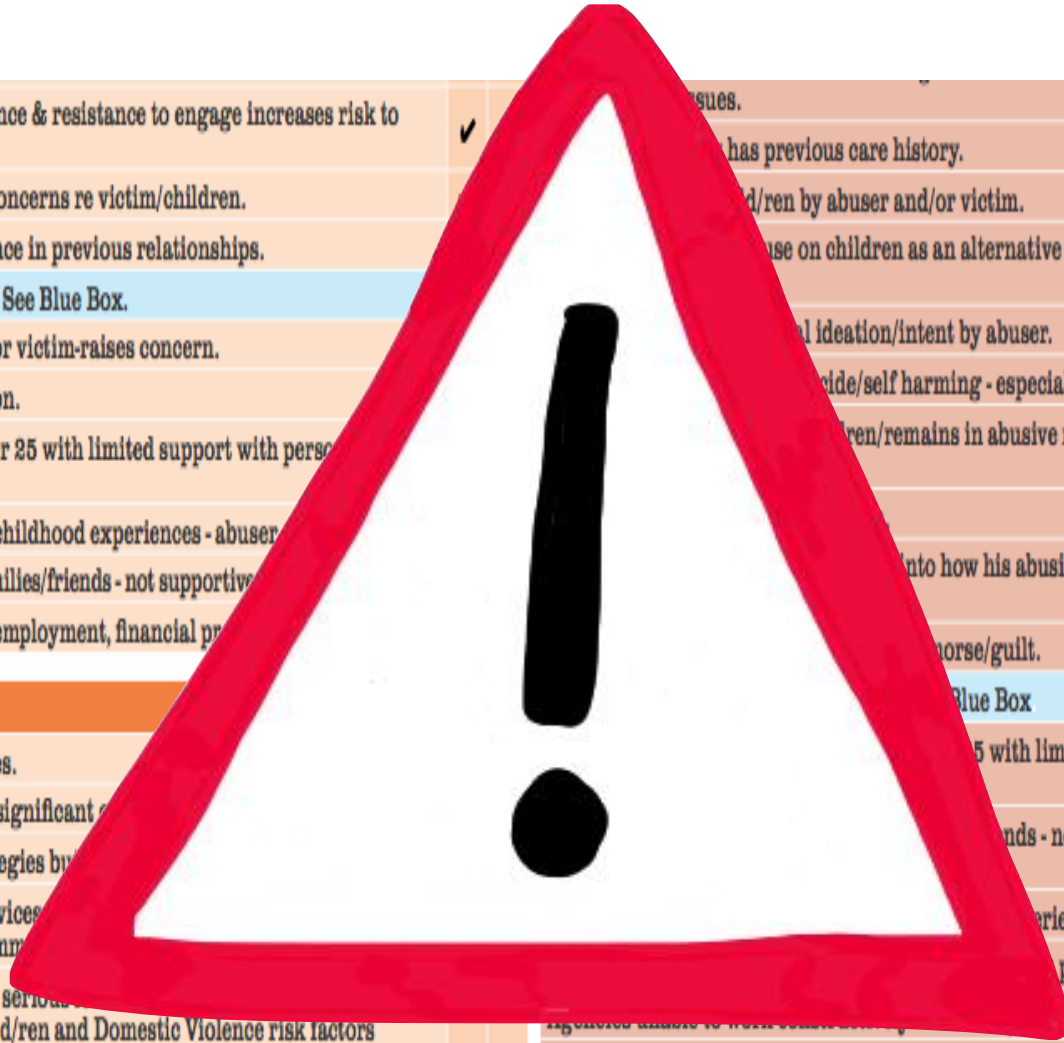
Child's mother relationship is positive, supportive and stable
 Significant other in child's life - positive and nurturing relationship
 Presence of child's mother is a restraint for the abuser
 A lower alcohol consumption for abuser and victim
 A lower income permits recovery and is willing to seek support for abuser's behaviour
 Victim has positive support from family/friends & community
 Victim appears emotionally strong (not worn-down by the abuser)
 Victim sought appropriate support and/or is willing to accept help from other agencies

Protective Factors

Believe in children
Barnardo's

Faith & Culture Safeguarding Children Checklist





Victim fears statutory services - avoidance & resistance to engage increases risk to children.	✓	issues.		
Family/Relatives/neighbours reports concerns re victim/children.		has previous care history.		
Victim has experienced domestic violence in previous relationships.		child/ren by abuser and/or victim.		
BME (Black, Minority, Ethnic) Issues: See Blue Box.		use on children as an alternative to harsher physical abuse by		
Adult learning difficulties-abuser and/or victim-raises concern.		al ideation/intent by abuser.		✓
Disability issues within family - isolation.		icide/self harming - especially BME victims.		
Age disparities of Abuser/Victim - under 25 with limited support with personal vulnerabilities.		child/ren/remains in abusive relationship, protection orders not		
History of childhood abuse/disruptive childhood experiences - abuser		into how his abusive behaviour is affecting child/		✓
Collusion issues present in extended families/friends - not supportive		deny/guilt.		✓
Recent life crises/stress factors - i.e unemployment, financial problems		Blue Box		
Protective factors		under 25 with limited support with personal		✓
Older child/ren use protective strategies.		friends - not supportive for victim and		✓
Victim will seek positive support from significant others		experiences abuser and/or victim.		✓
Victim - attempts to use protective strategies by		professionals.		✓
Victim will engage with supportive services		'Assessment Paralysis'.		✓
Control interfering with her level of communication		Abuser/victim use of avoidance/resistance to engage - misuse of complaints procedures.		
Limited protective factors are present - serious physical/sexual				
abuse of victim, emotional abuse of child/ren and Domestic Violence risk factors predict recidivism.				
Use of kinship placements as a protective factor - be alert to domestic violence having occurred or occurring in extended families.	✓			
Protective factors: See Scale 3.				Y S

Abuser's use of avoidance/resistance to engage in services increases risk level to children.	✓	
Victim fears statutory services - avoidance & resistance to engage increases risk to children.	✓	
Family/Relatives/neighbours reports concern about victim/children.	✓	
Victim has experienced domestic violence in previous relationships.	✓	
BME (Black, Minority, Ethnic)		
Adult learning difficulties and/or victim-raises concerns		
Disability issues within family - isolation.		
Age disparities of Abuser and victim - under 25 with limited support and personal vulnerabilities	✓	
History of child abuse	✓	
Collusion issues	✓	
Recent life circumstances		
Protective factors	Y	S
Older child/relative		
Victim will see		✓
Victim - attempts to use protective strategies but abuser's violent control is intense.		✓
Victim will engage with statutory services and seek safety but be alert to abuser's control interfering with help-seeking commitment to engage		✓
Limited protective factors are present and psychological abuse of victim, emotional abuse and psychological abuse risk factors predict recidivism.		
Use of kinship placements as a protective factor - be alert to domestic violence having occurred or occurring in extended families.		✓

MIND THE GAP

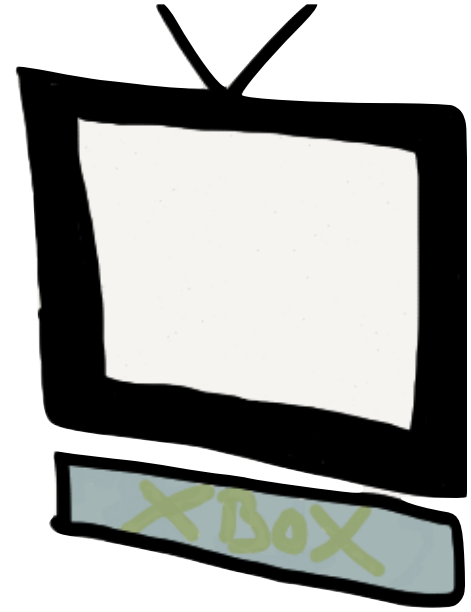




Believe in
children



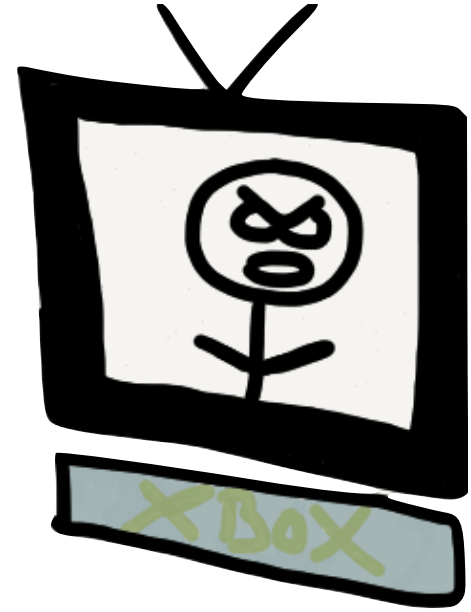
Barnardo's

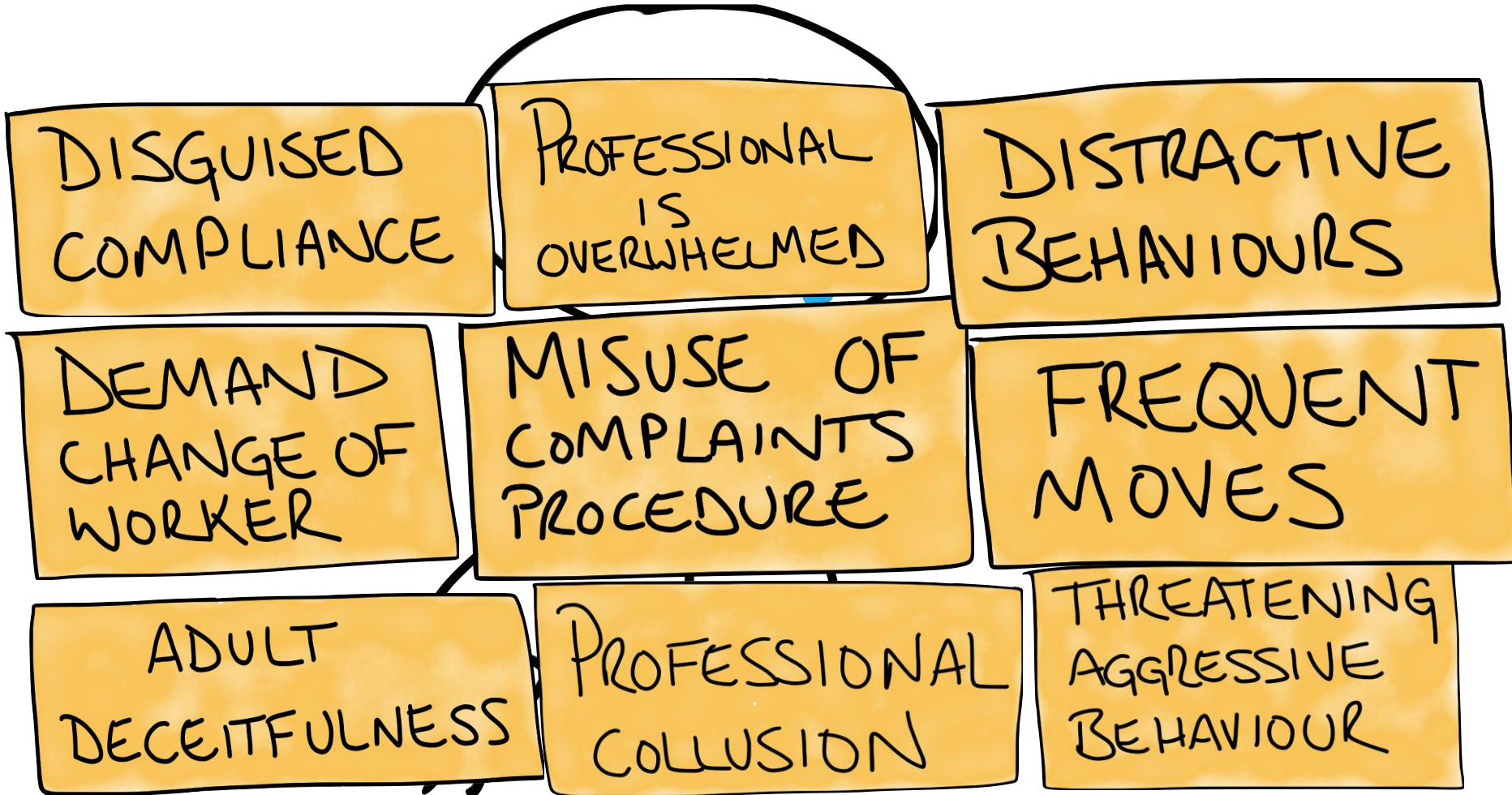


Believe in
children



Barnardo's





INFORM: Level of risk: Domestic Abuse & CP: Level 4: Threatened or used child with significant harm

Child's behavior with additional signs that require steps that are beyond support offered by the wider family or extended social network. The danger to the child is high due to the nature of the abuse.

Child's history of Domestic Abuse:

1 - 1 or more incidents of physical violence which were shared in the home.

Victim did not seek medical treatment.

Victim verbal abuse.

Child's history of Domestic Abuse:

Child was not taken into custody.

Control by abuser is not relaxed.

Child's history of Domestic Abuse:

Child mother relationship is deteriorating, protective and stable.

Significant abuse to child's self, positive and nurturing relationship.

Presence of child was a restraint for the abuser.

A lower degree of responsibility for abuse and violence.

A lower intensity of abuse received and is willing to seek support for abusive behavior.

Victim has positive support from family, friends & community.

Victim appears emotionally strong (not worn down by the abuse).

Victim sought appropriate support and/or is willing to accept help from other agencies.

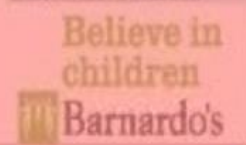
Child's history of Domestic Abuse:

Child mother relationship is deteriorating, protective & stable.

Are answered the following questions if the parent:

1. Cannot speak, read or write English
2. Have had for 12 months or more
3. Lack strong social networks
4. Live in temporary housing
5. Living below the poverty line
6. Has a child with a physical, emotional or cultural health issue
7. Living in a crowded community in London
8. Has a pregnancy or parenting practice understood by culture or faith which we set in the wider UK law & national norms
9. Recognize father's role or community leader as all powerful
10. Put a very high value on protecting family honor
11. It's the young person's duty to obey the father
12. It is inappropriate to refuse to father's authority
13. The strong discipline is a group coping

Do not add further questions. Please refer to the full matrix, available from the UKCC website.



INFORM: Level of risk: Domestic Abuse & CP: Level 3: Threatened or used child with significant harm

Child's behavior with additional signs. If repeated and protective measures are not taken there may be a risk of escalation to level 4.

Child's history of Domestic Abuse:

History of abuse includes incidents of physical violence short duration.

Victim has sought other support, medical and other not sought.

At times of incidents, body being hit/bruised - pushing, being pulled, shoving, slapping but not severely injured. Treatment of property.

Victim verbal abuse including use of derogatory language.

Self isolation. Abuser attempts to limit victim's activities, communicate & contact with others.

Child's history of Domestic Abuse:

Child was not present in the home during or incident but did not display trauma.

Physical health and emotional state of child is stable.

RACE (Risk, Abuse, Injury, Stress) issues in the home.

Disability issues within family, positive support networks.

Mental health issues - not diagnosed or serious. Abuser or victim seeking appropriate help.

A go to person within victim's tribe has supportive resources and an exit strategy.

Child's history of Domestic Abuse:

Child mother relationship is deteriorating, protective & stable.

In spite of abuse, victim was not prohibited from seeing or in the care of her children.

Significant abuse to child's self, positive and nurturing relationship.

Child's mother was pregnant during the abuse.

Victim attempted to use protective strategies with other children.

Victim is prepared to take action on safety issues.

Victim has sought other support from family, friends & community.

Victim willing to engage in services to address the abusive behavior.

Child's history of Domestic Abuse:

Child mother relationship is deteriorating, protective & stable.

Other children use protective strategies.

Victim did not seek positive support from significant others.

Victim attempts to use protective strategies but doesn't believe it is safe to do so.

Victim will engage with appropriate services and will only do so - in short in absence of other interventions with her level of involvement is engaged.

Barnardo's Domestic Violence Risk Identification Matrix

INFORM: Level of risk: Domestic Abuse & CP: Level 2: Threatened or used child with significant harm

Child's behavior with additional signs. If repeated and protective measures are not taken there may be a risk of escalation to level 3.

Child's history of Domestic Abuse:

History of abuse includes incidents of physical violence short duration.

Victim has sought other support, medical and other not sought.

At times of incidents, body being hit/bruised - pushing, being pulled, shoving, slapping but not severely injured. Treatment of property.

Victim verbal abuse including use of derogatory language.

Self isolation. Abuser attempts to limit victim's activities, communicate & contact with others.

Child's history of Domestic Abuse:

Child was not present in the home during or incident but did not display trauma.

Physical health and emotional state of child is stable.

RACE (Risk, Abuse, Injury, Stress) issues in the home.

Disability issues within family, positive support networks.

Mental health issues - not diagnosed or serious. Abuser or victim seeking appropriate help.

A go to person within victim's tribe has supportive resources and an exit strategy.

Child's history of Domestic Abuse:

Child mother relationship is deteriorating, protective & stable.

In spite of abuse, victim was not prohibited from seeing or in the care of her children.

Significant abuse to child's self, positive and nurturing relationship.

Child's mother was pregnant during the abuse.

Victim attempted to use protective strategies with other children.

Victim is prepared to take action on safety issues.

Victim has sought other support from family, friends & community.

Victim willing to engage in services to address the abusive behavior.

Child's history of Domestic Abuse:

Child mother relationship is deteriorating, protective & stable.

Other children use protective strategies.

Victim did not seek positive support from significant others.

Victim attempts to use protective strategies but doesn't believe it is safe to do so.

Victim will engage with appropriate services and will only do so - in short in absence of other interventions with her level of involvement is engaged.

Barnardo's Domestic Violence Risk Identification Matrix

INFORM: Level of risk: Domestic Abuse & CP: Level 1: Threatened or used child with significant harm

Child's behavior with additional signs. If repeated and protective measures are not taken there may be a risk of escalation to level 2.

Child's history of Domestic Abuse:

History of abuse includes incidents of physical violence short duration.

Victim has sought other support, medical and other not sought.

At times of incidents, body being hit/bruised - pushing, being pulled, shoving, slapping but not severely injured. Treatment of property.

Victim verbal abuse including use of derogatory language.

Self isolation. Abuser attempts to limit victim's activities, communicate & contact with others.

Child's history of Domestic Abuse:

Child was not present in the home during or incident but did not display trauma.

Physical health and emotional state of child is stable.

RACE (Risk, Abuse, Injury, Stress) issues in the home.

Disability issues within family, positive support networks.

Mental health issues - not diagnosed or serious. Abuser or victim seeking appropriate help.

A go to person within victim's tribe has supportive resources and an exit strategy.

Child's history of Domestic Abuse:

Child mother relationship is deteriorating, protective & stable.

In spite of abuse, victim was not prohibited from seeing or in the care of her children.

Significant abuse to child's self, positive and nurturing relationship.

Child's mother was pregnant during the abuse.

Victim attempted to use protective strategies with other children.

Victim is prepared to take action on safety issues.

Victim has sought other support from family, friends & community.

Victim willing to engage in services to address the abusive behavior.

Child's history of Domestic Abuse:

Child mother relationship is deteriorating, protective & stable.

Other children use protective strategies.

Victim did not seek positive support from significant others.

Victim attempts to use protective strategies but doesn't believe it is safe to do so.

Victim will engage with appropriate services and will only do so - in short in absence of other interventions with her level of involvement is engaged.

Barnardo's Domestic Violence Risk Identification Matrix

INFORM: Level of risk: Domestic Abuse & CP: Level 4: Threatened or used child with significant harm

Child's behavior with additional signs that require steps that are beyond support offered by the wider family or extended social network. The danger to the child is high due to the nature of the abuse.

Child's history of Domestic Abuse:

1 - 1 or more incidents of physical violence which were shared in the home.

Victim did not seek medical treatment.

Victim verbal abuse.

Child's history of Domestic Abuse:

Child was not taken into custody.

Control by abuser is not relaxed.

Child's history of Domestic Abuse:

Child mother relationship is deteriorating, protective and stable.

Significant abuse to child's self, positive and nurturing relationship.

Presence of child was a restraint for the abuser.

A lower degree of responsibility for abuse and violence.

A lower intensity of abuse received and is willing to seek support for abusive behavior.

Victim has positive support from family, friends & community.

Victim appears emotionally strong (not worn down by the abuse).

Victim sought appropriate support and/or is willing to accept help from other agencies.

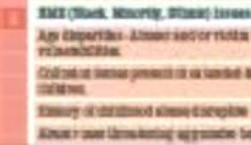
Child's history of Domestic Abuse:

Child mother relationship is deteriorating, protective & stable.

Are answered the following questions if the parent:

1. Cannot speak, read or write English
2. Have had for 12 months or more
3. Lack strong social networks
4. Live in temporary housing
5. Living below the poverty line
6. Has a child with a physical, emotional or cultural health issue
7. Living in a crowded community in London
8. Has a pregnancy or parenting practice understood by culture or faith which we set in the wider UK law & national norms
9. Recognize father's role or community leader as all powerful
10. Put a very high value on protecting family honor
11. It's the young person's duty to obey the father
12. It is inappropriate to refuse to father's authority
13. The strong discipline is a group coping

Do not add further questions. Please refer to the full matrix, available from the UKCC website.



INFORM: Level of risk: Domestic Abuse & CP: Level 3: Threatened or used child with significant harm

Child's behavior with additional signs. If repeated and protective measures are not taken there may be a risk of escalation to level 4.

Child's history of Domestic Abuse:

History of abuse includes incidents of physical violence short duration.

Victim has sought other support, medical and other not sought.

At times of incidents, body being hit/bruised - pushing, being pulled, shoving, slapping but not severely injured. Treatment of property.

Victim verbal abuse including use of derogatory language.

Self isolation. Abuser attempts to limit victim's activities, communicate & contact with others.

Child's history of Domestic Abuse:

Child was not present in the home during or incident but did not display trauma.

Physical health and emotional state of child is stable.

RACE (Risk, Abuse, Injury, Stress) issues in the home.

Disability issues within family, positive support networks.

Mental health issues - not diagnosed or serious. Abuser or victim seeking appropriate help.

A go to person within victim's tribe has supportive resources and an exit strategy.

Child's history of Domestic Abuse:

Child mother relationship is deteriorating, protective & stable.

In spite of abuse, victim was not prohibited from seeing or in the care of her children.

Significant abuse to child's self, positive and nurturing relationship.

Child's mother was pregnant during the abuse.

Victim attempted to use protective strategies with other children.

Victim is prepared to take action on safety issues.

Victim has sought other support from family, friends & community.

Victim willing to engage in services to address the abusive behavior.

Child's history of Domestic Abuse:

Child mother relationship is deteriorating, protective & stable.

Other children use protective strategies.

Victim did not seek positive support from significant others.

Victim attempts to use protective strategies but doesn't believe it is safe to do so.

Victim will engage with appropriate services and will only do so - in short in absence of other interventions with her level of involvement is engaged.

Barnardo's Domestic Violence Risk Identification Matrix

INFORM: Level of risk: Domestic Abuse & CP: Level 2: Threatened or used child with significant harm

Child's behavior with additional signs. If repeated and protective measures are not taken there may be a risk of escalation to level 3.

Child's history of Domestic Abuse:

History of abuse includes incidents of physical violence short duration.

Victim has sought other support, medical and other not sought.

At times of incidents, body being hit/bruised - pushing, being pulled, shoving, slapping but not severely injured. Treatment of property.

Victim verbal abuse including use of derogatory language.

Self isolation. Abuser attempts to limit victim's activities, communicate & contact with others.

Child's history of Domestic Abuse:

Child was not present in the home during or incident but did not display trauma.

Physical health and emotional state of child is stable.

RACE (Risk, Abuse, Injury, Stress) issues in the home.

Disability issues within family, positive support networks.

Mental health issues - not diagnosed or serious. Abuser or victim seeking appropriate help.

A go to person within victim's tribe has supportive resources and an exit strategy.

Child's history of Domestic Abuse:

Child mother relationship is deteriorating, protective & stable.

In spite of abuse, victim was not prohibited from seeing or in the care of her children.

Significant abuse to child's self, positive and nurturing relationship.

Child's mother was pregnant during the abuse.

Victim attempted to use protective strategies with other children.

Victim is prepared to take action on safety issues.

Victim has sought other support from family, friends & community.

Victim willing to engage in services to address the abusive behavior.

Child's history of Domestic Abuse:

Child mother relationship is deteriorating, protective & stable.

Other children use protective strategies.

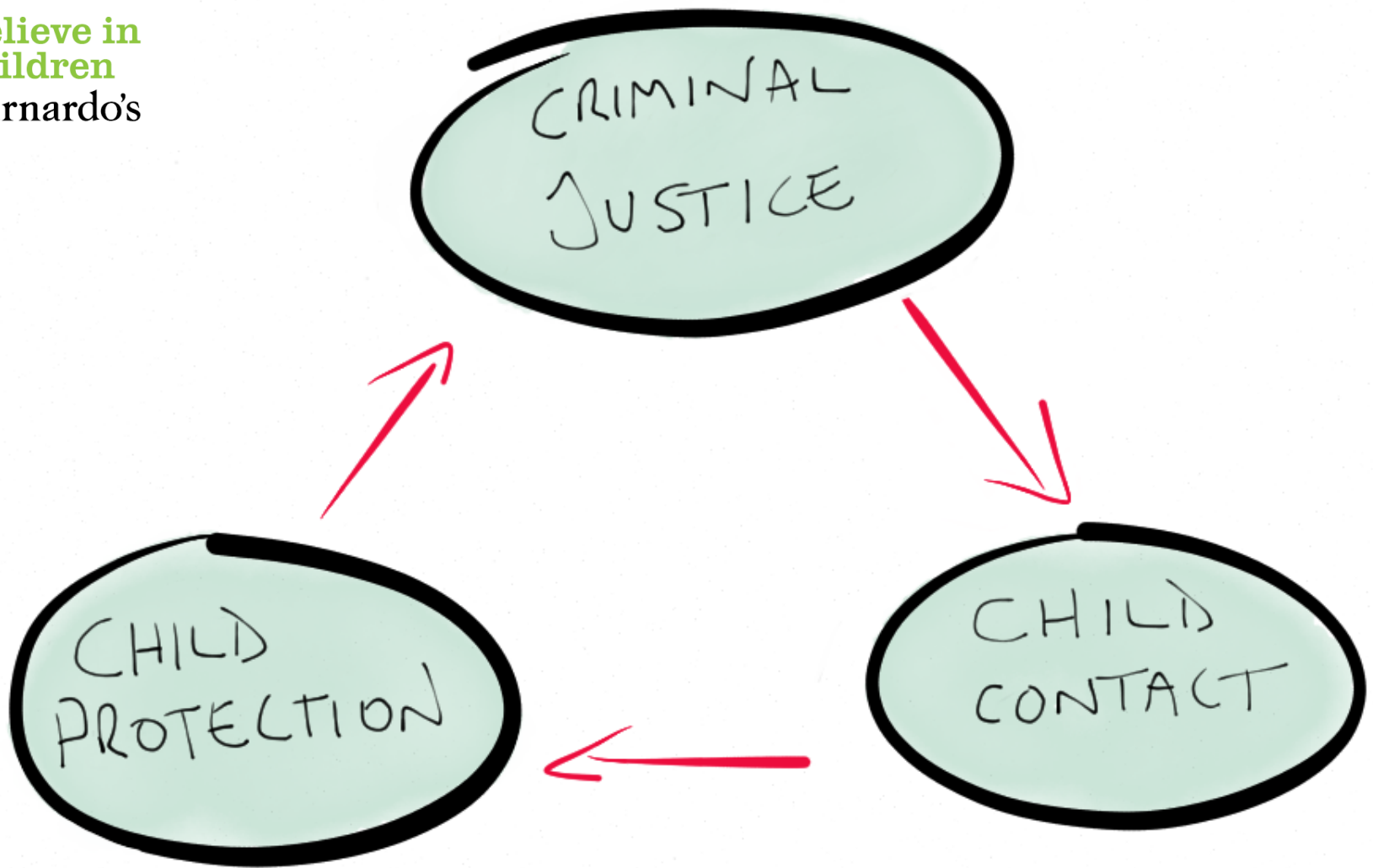
Victim did not seek positive support from significant others.

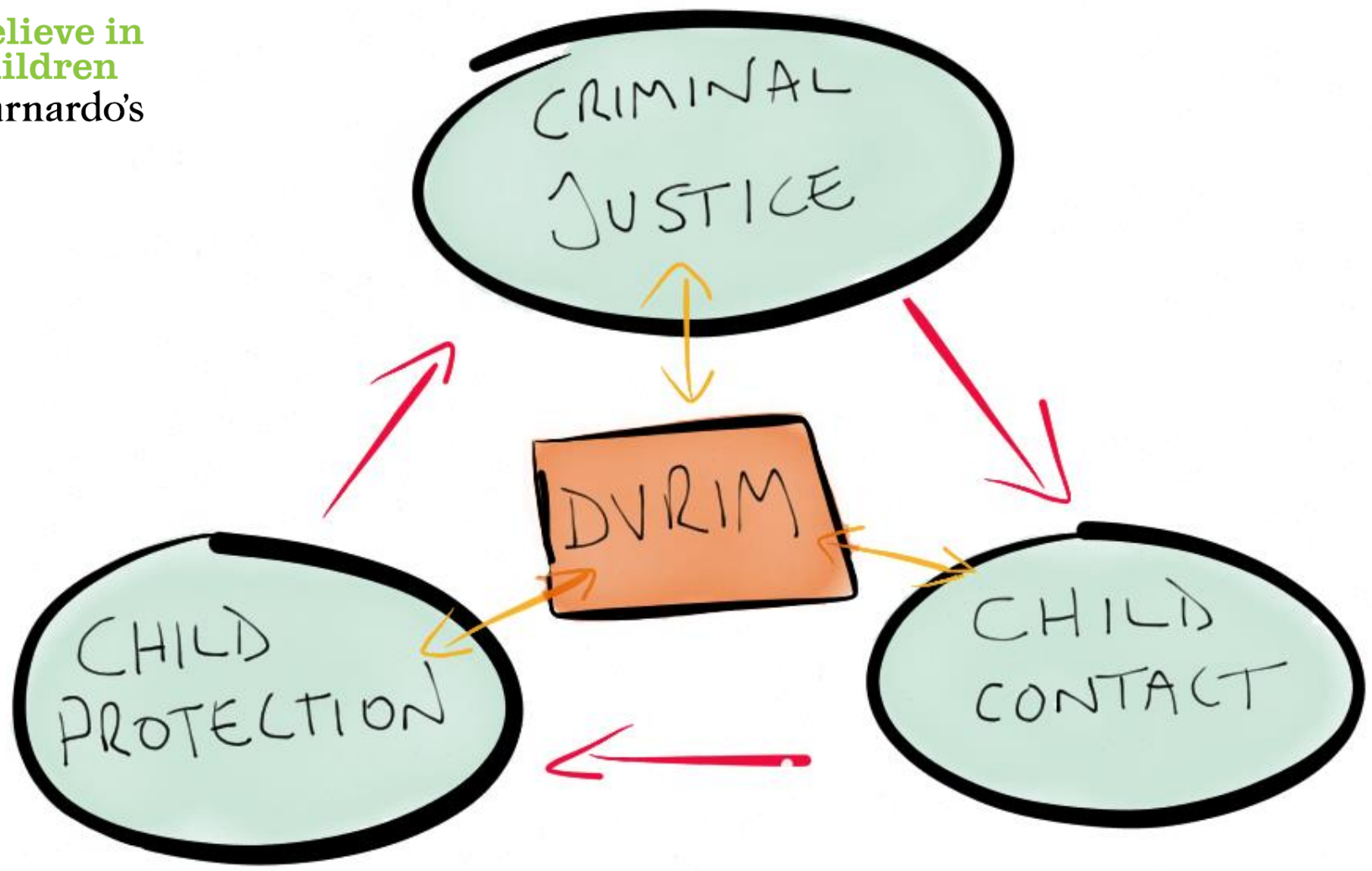
Victim attempts to use protective strategies but doesn't believe it is safe to do so.

Victim will engage with appropriate services and will only do so - in short in absence of other interventions with her level of involvement is engaged.

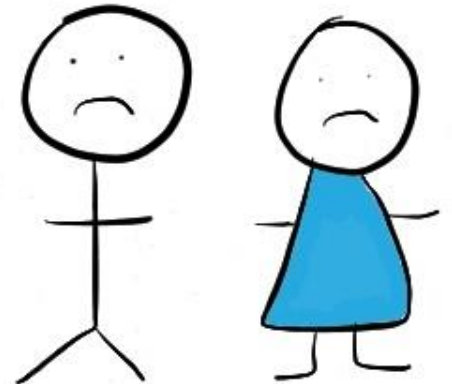
Barnardo's Domestic Violence Risk Identification Matrix

Scale 4





KEY STRATEGIES



DVRIM- Schedule Interview Tool for Engaging abusive fathers in child protection assessment

